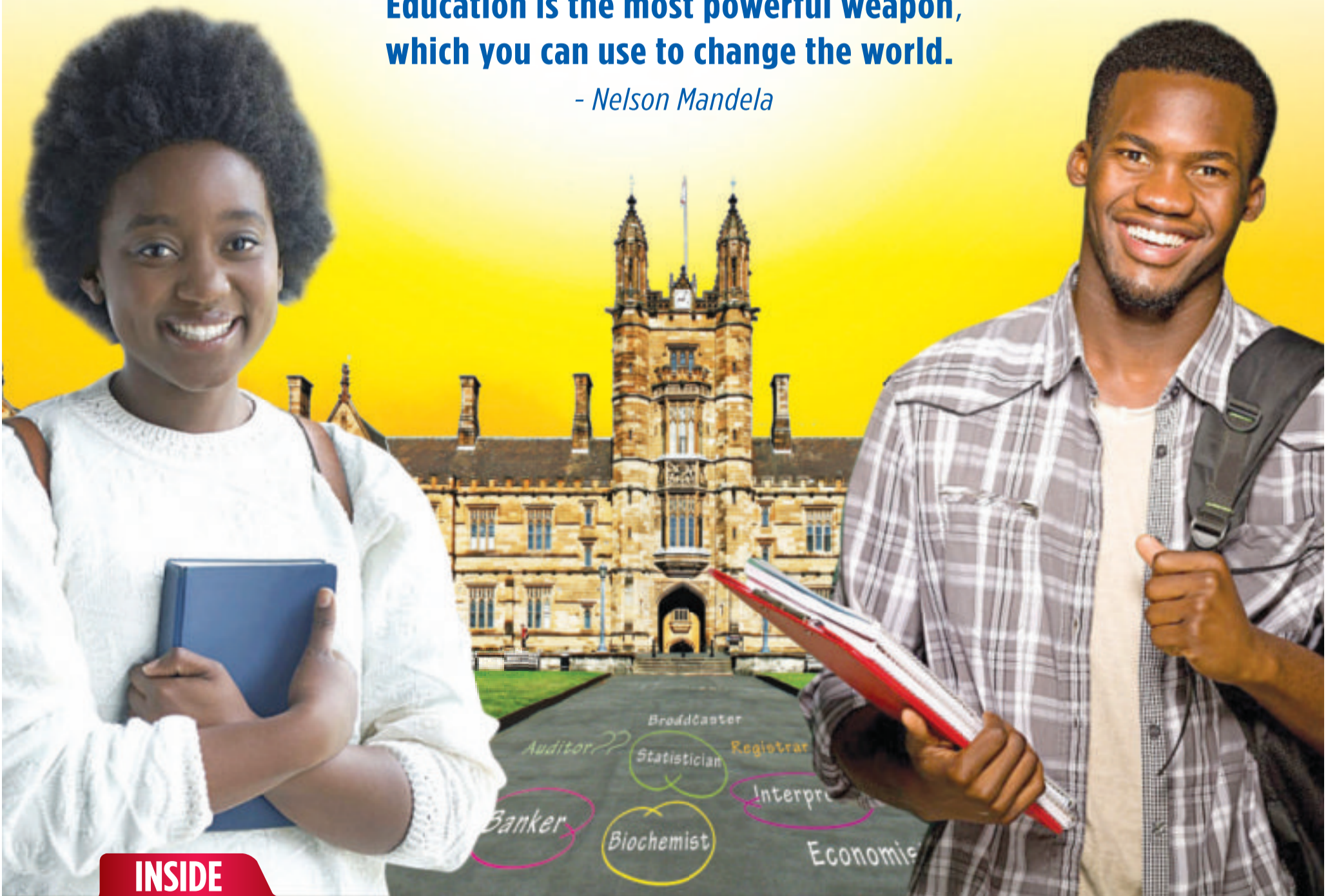


# WHAT NEXT AFTER? KCSE!

PART ONE

Education is the most powerful weapon,  
which you can use to change the world.

- Nelson Mandela



INSIDE

➔ Current state of higher education sector

➔ Technical vocational education and training

➔ **Plus:** Learning partnerships

## Current State of Higher Education Sector

# Opportunities abound in higher learning; just look around wisely

As the market adjusts to last year's significant drop in KCSE performance, students, more than ever before, will require comprehensive information and guidance, particularly in reference to career options

By DAVID ADUDA  
daduda@ke.nationmedia.com

The question consuming the minds of last year's Form Four leavers and their parents is: what should I do now that the results have been released? What options are available and how do I make the right choice?

These questions are particularly pertinent this time, given the dramatic change in the results. Only 15.4 per cent of the candidates qualified to join universities. This means that out of the 574,125 students who sat KCSE exams last year, only 88,929 attained at least the set university entry mark of C+. Even out of the qualifiers, just 141 candidates obtained grade A, representing 0.02 per cent, a cutback from 2,685 in 2015.

Overall, school leavers should be guided by the following: what course do I qualify for? Do I have the aptitude and passion to pursue it? Where can I best pursue it? What are the career options? How marketable is the course? When does the course start and where do I secure the funding?

For the qualifiers, the question is which university to join and what course to pursue. Better still, the candidates should consider whether to wait for the government admission, where one is placed at any university and allocated a course depending on the available slots, or actively apply for a study of choice at a private university or under the parallel degree programmes at the public universities.

Currently, the country has 70 universities – 33 public and 37 private. Unlike in the past, admission to all the universities is jointly done by the Kenya Universities and Colleges Central Placement Services (KUCCPS), which replaced the previous universities Joint Admissions Board (Jab). Already,



Education CS Dr. Fred Matiang'i addresses journalists at Shimo La Tewa High School in Mombasa after release of KCSE results in December 2016.

the placement service has put out an advertisement calling on the Kenya Certificate of Secondary Education (KCSE) qualifiers to revise their courses based on their performance. In the announcement, the students are required to revise their courses between January 30 and February 17.

Given the reduced number of university qualifiers, all of them are assured of places at the public universities. In theory, this means that private universities or parallel degree programmes in public universities may not get students. However, in practice, the students have the opportunity to make choices about the courses they want to pursue and the universities they wish to study in. But this requires comprehensive information and guidance, particularly in reference to career options and employment opportunities.

Based on last year's performance, things are going to change significantly. First, the entry cluster points for courses and programmes will have to be revised downwards given the decline in performance. In 2015, the most competitive courses such as law, architecture,

The challenge is that students and parents have been socialised to believe that the only path to the top is to go university

medicine, engineering and computer studies admitted those with a minimum of 44 points in the cluster subjects. But this will be lowered this time round. Candidates with B and B+ are likely to get into the competitive courses.

The flipside, however, is that some courses may not attract students, and given dwindling budgets, universities may be forced to drop some faculties. A consequence is that universities will have to redefine their courses to make them more attractive. Private universities, in particular, will be compelled to rethink their programmes and fashion them in a manner that makes them compelling.

For those who did not qualify for university education, the option is middle-level colleges. Here, there is a full range of colleges and courses. In total,

there are about 600 registered middle-level colleges in the country.

Notably, there has been an aggressive drive to promote technical and vocational training as a viable and promising pathway for high school leavers who do not meet university minimum entry mark. In this respect, KUCCPS has asked students who obtained grades C- and C to apply for diploma courses at the public training colleges.

Eight new national polytechnics have been set up, namely, Kabete, Kitale, Meru, Mombasa, Nyeri, Sigalagala, Gusii and North Eastern Province Polytechnic. This brings to 10 the national polytechnics. The others are Kisumu and Eldoret, the long-serving national polytechnics.

A significant development in this sector is that the government

is offering bursaries to eligible candidates. Early this week, Education Cabinet Secretary Fred Matiang'i announced a Sh900 million loans kitty to be administered by the Higher Education Loans Board (Helb). For a good measure, he asked Helb to publicise and popularise the loans and bursaries to ensure all eligible students benefitted.

Several other organisations such as Rattansi Educational Trust and Equity Bank under the Wings to Fly Programme, support students seeking training in middle-level colleges, among them, technical and vocational training institutions.

In addition to all these, there are traditional training institutions such as the teacher training colleges, medical training colleges, Kenya Utalii College, the Kenya Institute of Mass Communication, Kenya Railway Training School, among others, that have clear openings for high school leavers, and which significantly promise good career options and upward economic and social mobility.

In effect, there are many opportunities, complete with funding, for students to pursue higher education in middle-level colleges.

The challenge, however, is that students and parents have been socialised to believe that the only path to the top is to go university. Hence, it will take a lot of convincing to get the school leavers to apply for the middle-level colleges.

Even so, the overarching point is that high school leavers and their parents must think seriously about higher education opportunities and the outcomes. They must change the mind-set where people only think of university education, yet there are few job opportunities for university graduates; but shun technical and vocational training where there are huge chances for career advancement.

## FACT BOX

- Current number of universities: 33 public; 37 private
- Percentage of 2016 KCSE who qualified to join university: 15.4%
- Number of registered middle level colleges: 600
- Amount set aside as loans for students joining middle-level colleges: Sh900 million

HIGHER EDUCATION AND CAREER GUIDE

Restoring Standards in Learning

# From sheer volumes to quality learning

Recently, the government halted the setting up of more satellite campuses in a move aimed at controlling expansion

BY OUMA WANZALA  
owanzala@ke.nationmedia.com

The unprecedented expansion of university education in Kenya has brought with it enormous opportunities for advanced qualifications, as well as unparalleled challenges that put some of those credentials to question.

As in other countries in the developing world, more and more Kenyans are seeking university degrees as a way of investing in themselves, hoping to increase their human capital to enable them live a quality and modern life.

The expansion of university education has been exceptional. In 2002, Kenya had six public universities, but at the end of last year, the country had 31 of them.

The enrolments have also been equally phenomenal, as the current university student population now stands at about 500,000.

However, with the expansion, some institutions have ignored the set guidelines, with the government threatening to close down universities that are not adhering to standards and regulations.

The Commission for University Education (CUE),

which regulates university education, has since embarked on a quality audit of all universities.

Chancellors of public universities agree that there is need for increased focus on quality and relevance by investing in essential technical, technological and scientific knowledge and skills critical to the realisation of rapid social and economic growth, as well as sustainable development.

Chancellors are also concerned with the serious shortage of PhD holders to teach and do research at both public and private universities.

“This cadre of professionals is vital for the delivery of quality education at both undergraduate and graduate levels. It is recommended, therefore, that postgraduate development/graduate schools be strengthened at all universities,” states a report by Chancellors Committee chaired Prof Judith Bahemuka.

President Uhuru Kenyatta has also challenged universities to be more concerned about quality and critically compare today’s graduates with those of the 1970s to the 1980s.

Recently, the government halted the setting up of more



Commission for University Education CEO Prof David Some, speaking on behalf of Education Cabinet Secretary during the Harmonisation of Standards in University Education Workshop in Nairobi on March 7, 2016. PHOTO | FILE

satellite campuses in a move aimed at controlling expansion. Several universities, in adhering to the directive, have shut down some campuses.

“Chancellors should critically question whether universities are developing a money loving culture where the revenue generated is more important than the product produced. This includes questioning whether

the public universities are meeting the demands of Kenya today, with targeted programmes based on what the market really needs,” said President Kenyatta when he met the chancellors for a brief.

There have also been a push to have equitable allocation of the available resources, taking into consideration the need, stage of development of the university, programmes offered and capacity to offer Module 2 courses.

And to increase enrolment in science related courses, the government is in July expected

to implement the Differentiated Unit Cost system of funding, to allow the Higher Education Loans Board (Helb) to disburse loans to students depending on the actual cost of the courses.

“This departure from the current uniform allocation for all students would see those who study science-based courses receiving much higher allocations than those in the liberal arts,” said Education Cabinet Secretary Fred Matiang’i.

The Kenya Universities and Colleges Central Placement Service (KUCCPS), which places students in colleges and universities, is also expected to place 88,929 students who scored C+ and above to various programmes.

Courses such as architectural studies, actuarial science, computer science, civil engineering, electrical and electronic engineering, mechanical engineering, dental surgery, pharmacy, veterinary medicine, medicine and surgery and law, have continued to attract more students despite limited space.

Last year, more than 74,000 students joined public universities, while another 12,000 were sponsored by the government to study in private universities.

**74,000** The number of students that joined public universities in 2016.

**WAKA CMEC TRAINING INSTITUTE**  
EMPOWERING THE COMMUNITY  
P.O Box 188 NYERI | Phone no : 0707472152  
Website: www.wakamedcenter.org

**Is offering the following courses**  
In their Nyeri CAMPUS

DIPLOMA PROGRAMME	ADMISSION REQUIREMENTS	INTAKE
<b>Nursing and Midwifery</b> (Accredited by the Nursing Council of Kenya)	<b>Minimum educational qualifications:-</b> Mean Grade: K.C.S.E score of C (Plain and above) or its equivalent. <b>Mandatory subjects</b> (plain ) and above or Credit in English or Kiswahili C (plain ) and above or Credit in Biology or Biological Sciences' C- (Minus) and above or Pass in any of the following; Mathematics, Physics, Physical Sciences, Chemistry.	March and September
Community Development	Mean grade of C in KCSE and grade C- in English and Mathematics D+ KCE certificate with a Division III in KCE with credit passes in mathematics and English	May
Comprehensive Reproductive Health Accredited by the Division of Reproductive health - MOH)	KCSE certificate with a minimum of C (plain). Experience of over 1 year in RH service provision in public or private sector	May

Duly filled application forms should be addressed to the Principal.  
Application should be accompanied by copies of relevant academic and/or professional certificates, and one passport size photo and a copy of National ID or a birth certificate.  
Application forms can be downloaded from [www.wakamedcentre.org](http://www.wakamedcentre.org) OR visit our institute in Ruring'u, Nyeri

For Payments Details Kindly contact us on **0707472152**  
E.mail: wakacmec@gmail.com

**Sensei Institute of Technology**

Delivering practical skills for the Construction Industry  
Requirement: ID Only

**Driving & Mechanics Department**

- Driving school
- Plant Operation
- Plant Mechanics
- Motor Vehicle Mechanics
- Motor Cycle Mechanics

**Building & Construction Department**

- Electrical Installation
- Painting & Decoration
- Plumbing & Drainage
- Floor & Wall tile Fixing
- Welding & Fabrication
- Masonry
- Road & Dam Construction

**Diploma / Certificate courses**

- Construction Plant Engineering
- Civil Engineering
- Mechanical Engineering
- Electrical Engineering

**DIPLOMA** 3Yrs  
Minimum C-  
**CERTIFICATE** 2Yrs  
Minimum D

MY SKILLS MY FUTURE  
WWW.SENSEITECHNOLOGY.CO.KE

ACCOMODATION AVAILABLE

**APPLY NOW**  
Nakuru & Nairobi (Kitengela) Campuses!!

Hear what our alumni had to say :

I will always be proud to be an alumni. I am now working at a government parastatal in Mombasa. God bless you.You built in me a strong & unstoppable gentleman  
~ Francis Waweru

I am who I am today because of the training I got at Sensei. Truly My skills, My future!  
~ Daniel Kiplagat

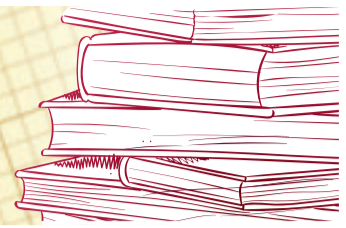
NAKURU 0729 - 891 301 | NAIROBI 0717 - 951 055

f sensei institute of technology sit t senseitraining



# AFTER KCSE

## HIGHER EDUCATION AND CAREER GUIDE



# Come let us help you find university abroad, for free

Uniserv has lined up numerous education fairs and exhibitions to take place in Kenya, Uganda, Rwanda and Tanzania in the first quarter of 2017

By **EVANS ONGWAE**  
eongwae@ke.nationmedia.com

Uniserv, a local firm that assists East African students to process their way to foreign universities of their choice, is introducing new destinations. The range of universities available to students include those found in Western and Eastern Europe, North America and the popular Asian destinations such as Malaysia, India and China, among others. Uniserv facilitates applications to universities as well as student visa

applications and make the process as easy as possible – for free.

“We do not charge for our services,” says Mr Amin Esmail, the firm’s chief executive.

Students want to know which universities offer the programmes they would like to pursue. Beyond that, they want to know the countries in which these universities are located to get an idea of the cost of living. This assists them in choosing a course, university and country that best suits them.

In all this, the role of staff at Uniserv is to guide and counsel students by providing information and guidance that helps them arrive at a decision they are comfortable with.

“Student want destinations that offer high quality education yet are not costly to live in,” he said during an interview. “Then there are those who prefer Western universities. Generally, they

appreciate international exposure.”

He, however, pointed out that with globalization, quality university education is available all over the world. This is because technology has enabled universities to effectively partner with and open affiliates in diverse countries.

“For those students who are in a position to get an international education, there are great choices,” says Mr Esmail.

“Uniserv had been previously working exclusively for United Kingdom (UK) universities, sending thousands of East African students to those institutions. About 70 per cent of local students who join UK universities do so through us,” he adds. More recently, the demand has shown an increase towards institutions in Canada and Australia though. Uniserv has responded by partnering with these institutions and now represents over 300 universities around the world including the most sought out countries such as

USA, Canada, Australia, USA, Malaysia, etc.

Uniserv hosts exhibitions in East Africa where 50 UK universities spend several days at exhibitions and talk about their programmes. They now also host fairs to cater for institutions in other countries coming up soon.

“Different universities have different strengths,” explains Mr Esmail. “Uniserv helps students and their parents or guardians to get as much information from the horse’s mouth. This helps them make informed choices when making applications.”

He adds that if the applicants go to Uniserv, they do not have to student their original academic certificates to the universities they are applying to. Uniserv certifies the documents and the students send photocopies instead.

The firm also helps students fill in Visa application forms and as Mr esmail reports, “we attain almost 100 per cent Visa success rate. We guide students – not their parents – to do this. The only time parents see us is when they have questions about the financial requirements of the processes. No student documents are left in our office.

We use photocopies until students are required to present original documents at the embassy or high commission.”

After a student has obtained a Visa, the dedicated Uniserv staff takes the student through a pre-departure briefing. This is an explanation of what students need to carry and the proces they will go through at the airport immigration and customs desks before departure.

“A majority of students are given on-campus accommodation,” notes Mr Esmail. “We explain to them what this entails and how they will find their way to the university upon landing at the airport. We also explain to them the process they will go through during orientation.”

Uniserv has lined up numerous education fairs and exhibitions to take place in Kenya, Uganda, Rwanda and Tanzania in the first quarter of 2017. Delegates from Turkish, Cypriot, United States, Canadian, Asutralian, United Kingdom and other European universities will be available to explain their programmes to prospective students. The fair details are available on the firm’s official website.

## CONGRATULATIONS

Uniserv Education congratulates all the students who sat for the 2016 KCSE exams.

We are more than ready to link you up with top ranked universities worldwide.

Visit our office with your results and apply now!!

### WHAT NEXT AFTER KCSE?

Apply to study in over 200 leading universities worldwide

#### Our Study Destinations Include

UK | USA | CANADA | MALAYSIA | AUSTRALIA  
NEW ZEALAND | SWITZERLAND | TURKEY | CYPRUS  
CHINA | GERMANY | INDIA | SOUTH AFRICA  
and many more..

Apply through  
Uniserv at no cost

For more information, please contact

**UNISERV NAIROBI**  
9th Floor, Fortis Tower,  
Woodvale Grove, Westlands  
Cell: 0723 597 445, 0735 014 549  
Email: info@uniserveducation.com

**UNISERV MOMBASA**  
1st Floor, Kalair Centre,  
Opp. Texas Alarms, Nyali Road  
Cell: 0729 575 173, 0735 091 072  
Email: msa@uniserveducation.com



[www.uniserveducation.com](http://www.uniserveducation.com)

Uniserv Education

@UniservEd



## Congratulations to KCSE candidates

### STUDY AT A TOP UNIVERSITY WITH KAPLAN INTERNATIONAL PATHWAYS

#### WHY STUDY WITH KAPLAN?

- Prepare for your degree by improving key academic skills
- Guaranteed entry to your chosen university\*
- Safe and modern accommodation

\*When you successfully pass your university pathway course at the required level

**KAPLAN** INTERNATIONAL PATHWAYS

[kaplanpathways.com](http://kaplanpathways.com) | Search KaplanPathways

#### OUR UNIVERSITY PARTNERS IN THE UK

University of Aberdeen	University of Liverpool
Aston University	The University of Nottingham
University of Birmingham	Nottingham Trent University
Bournemouth University	University of Salford
University of Brighton	University of the West of England, Bristol
City, University of London	University of Westminster
Cranfield University	University of York
University of Glasgow	

#### OUR UNIVERSITY PARTNERS IN THE US

Northeastern University
Pace University
University of Tulsa

For more information, please contact

**UNISERV NAIROBI**, 9th Floor, Fortis Tower,  
Woodvale Grove, Westlands  
C: +254 734 010 814 E: info@uniserveducation.com



[www.uniserveducation.com](http://www.uniserveducation.com)  
Uniserv Education  
@UniservEd



**QUALITY UK DEGREE RIGHT HERE IN KENYA**

**JANUARY 2017 INTAKE ONGOING**

Become the next prominent businessman, the next innovative entrepreneur, a respected accountant or envied marketer and stay ahead of the competition. At Edulink we will equip you with the tools and skills needed to realise your true potential.

Make the right choice. Enrol now & earn a quality UK degree in Business from the University of Northampton right here in Kenya.

#### **INTERNATIONAL FOUNDATION PROGRAMME (IFP)**

- Successful completion of the IFP gives you automatic entry to our degree programme.

#### **UNDERGRADUATE COURSES:**

- BA (Hons) Business Studies
- BA (Hons) Business and Accounting
- BA (Hons) Business and Entrepreneurship
- BA (Hons) Business and Marketing Management

#### **PROFESSIONAL COURSES:**

- Advanced Diploma in Software Engineering
- Advanced Diploma in Multimedia and Animation
- Certificate of Proficiency in Information System Management
- Certificate in Multimedia



[www.edulink.ac.ke](http://www.edulink.ac.ke)



Edulink International College



@EICInfo



@EICNairobi

Ngong Road, Ndemi Road Junction | Call: +254 20 366 60 30/5/6 | Email: [admission@edulink.ac.ke](mailto:admission@edulink.ac.ke)

Accredited by Commission for University Education. Ref: CUE/8/153/31  
Technical and Vocational Educational Training Authority. Ref: MST/INS/14/190E/(4)

HIGHER EDUCATION AND  
CAREER GUIDE

## Technical Vocational Education and Training

# Govt steps up effort to promote science and technology studies

Part of the strategy is to have at least one Technical and Vocational College in each constituency

BY OUMA WANZALA  
owanzala@ke.nationmedia.com

The government is targeting to enrol at least 400,000 candidates who sat for last year's KCSE exams in Technical Vocational Education and Training (TVET) institutions, as it steps up efforts to have more students to study science and technology based courses.

In order to cater for this increase, the Daily Nation has established that the government is targeting to have at least one Technical and Vocational College (TVC) in every constituency.

So far, 60 new TVCs have been constructed and a further 70 are at various stages of completion.

This, the government says, will enable the country's higher education to be in line with its vision 2030 objectives and remove the perception that TVET education is less prestigious and of lower value to university qualifications.

In 2015, only 12,000 students applied to join TVET institutions against a declared capacity of 50,000. Now the Ministry of Education has expanded the number of slots in order to absorb the high number of candidates who scored less than C+ in the 2016 KCSE exams.

In these exams, only 88,929 candidates had the minimum university entry qualification of a mean grade of C+ and above. This translates to 5.4 per cent of those who sat for the examinations.

Education Cabinet Secretary Fred Matiang'i told the Daily Nation that the government had put in place the necessary legal and policy framework for the reform of TVET.

"TVET ought to be a destination of choice for those who wish to acquire

the skills required to move this country to the next level of economic development," he said.

"As a matter of fact, evidence suggests that TVET education is as of equal value and in some cases even more valuable than a traditional university degree," he added.

### Targeting emerging sectors

As part of the new plan, TVET institutions will offer tailor made courses targeting emerging sectors and infrastructure projects. These include oil and gas, Northern Corridor Integrated Project, the Lamu Port-South Sudan Ethiopia Transport (LAPSET), the Standard Gauge Railway, airports and highways expansion projects, and the geothermal and wind energy projects.

Since the elevation of Kenya and Mombasa Polytechnics into technical universities a few years ago, Kenya has had only two national polytechnics: Kisumu and Eldoret.

However, eight technical training institutes have now been elevated to national polytechnics, bringing the number to 10 in the country. These are Kabete, Kitale, Meru, Mombasa, Nyeri, Sigalagala, North Eastern Province and Gusii technical institutes.

Additionally, the Higher Education Loans Board (HELB) has said it has about Sh900 million that will be issued as loans to students in TVET institutions, while the Kenya Universities and Colleges Central Placement Service (KUCCPS) has embarked on placement of students to these institutions.

Dr Matiang'i said the government had injected substantial financial support for the facelift of TVET institutions, scaling-up their private sector participation and rationalising TVET framework and structure.

"Many of the public TVET institutions have been supplied with state of the art equipment, with 10 of them being provided with smart classrooms," he said.



TVET ought to be a destination of choice for those who wish to acquire the skills required to move this country to the next level of economic development

Dr Fred Matiang'i

"This will not only enhance access to technical training for all Kenyans, but ensure that the training is up to international standards for global competitiveness," he added.

By doing this, the government hopes to emulate Asian economic giants such as China, Malaysia and Korea, where 50 per cent of their tertiary students are enrolled in TVET programmes.

In Kenya, the government says out of the over 500,000 students enrolled in various universities, 90 per cent are studying art-based courses. This is greatly contributing to the lack of jobs. The country's current joblessness rate for graduates is 45 per cent, the highest in East Africa.

training institutions and youth representatives. The event is expected to promote policy debate and dialogue on the various TVET issues. Further, it aims to strengthen collaborations among TVET partners in Kenya. Additionally, it will allow stakeholders from public and private sectors as well as development partners, to showcase best practices, products and innovations. The skills show targets out of school youth, current Form Three



Dr. Dinah Mwinzi, Principal Secretary, State Department of Vocational and Technical Training, in the Ministry of Education, accompanied by Edwin Tarno (right), Rift Valley Technical Training Institute's Principal and other guests look on as a student operates a machine during the 5th Rift Valley Technical Training Institute International Conference on May 27, 2016. The three-day event

### World Bank Study

A recently released study by the World Bank indicates that "countries that have successfully transitioned from low to middle-income status, and in turn from middle to high-income, have appropriately balanced academic and professional qualifications".

As such, the Kenya government has immediately embarked on streamlining a fragmented TVET delivery system.

"We are in the advanced stages of establishing the Kenya National Skills Development Council, which will be the apex policy organ of the TVET system, and will provide a national skills development training strategy that will be multi-ministerial and driven by the private sector," said Dr Matiang'i.

He said the ministry, through TVET Authority (TVETA) is committed to ensure that all new institutions deliver

quality and relevant programmes as demanded by our labour market.

To achieve a "globally competitive quality education, training and research for sustainable development" within the TVET system, Kenya Vision 2030 places great emphasis on the link between education, training and the labour market, the need to create entrepreneurial skills and competencies and strong public and private partnerships.

The objective of Kenya's Vision 2030 is to make Kenya "a newly industrialising, middle-income country, providing high quality life for all its citizens, by the year 2030". In order to achieve this, the country is aiming at modernising its industrial production to attract foreign markets for her goods and services in order to generate real income for the country.

## Conference to promote policy debate on TVET matters

By EVANS ONGWAE  
eongwae@ke.nationmedia.com

Kenyatta International Convention Centre is the venue of a two-day national technical and vocational training (TVET) conference. The event kicks off today and ends tomorrow.

Dubbed, Hands on the Future National TVET Conference, it is also a platform for the Kenya Skills Show. The first Kenyan Vocational Training Conference was held on

March 6, 2014 in Nairobi. Thereafter, a permanent working group (PWG) was constituted to oversee the efforts of Kenya's vocational training transformation. The PWG, created in 2014, incorporates the Kenyan government, private sector, academia and development partners.

This year's conference will bring together government, private sector, development partners, NGOs, TVET institutions,

science, technology and innovation, as highlighted in the Kenya Vision 2030.

To achieve a "globally competitive quality education, training and research for sustainable development" within the TVET system, Kenya's Vision 2030 places great emphasis on the link between education, training and the labour market. It also stresses the need to create entrepreneurial skills and competencies, and strong public and private partnerships.

## Are you pursuing an artisan or craftsman course?

Did you know that HELB offers Technical, Vocational Education and Training [TVET] loans and bursaries to eligible applicants in public TVET institutes recognized by the Ministry of Education [MoE], members of the Kenya Association of Technical Training Institutions [KATTI] and placed by Kenya Universities Colleges and Placement Service [KUCCPS].



## HELB TVET LOAN APPLICATION FAQs

### 1. Who is eligible for a HELB Technical, Vocational Education & Training [TVET] Loan?

- i. Students in the public Technical, Vocational & Education Training [TVET] Institutes recognized by the Ministry of Education [MoE], a member of The Kenya Association of Technical Training Institutions [KATTI] and placed by Kenya Universities and Colleges Central Placement Service [KUCCPS]
- ii. Direct Entry Self-Sponsored Students in the public Technical, Vocational & Education Training [TVET] Institutes recognized by the Ministry of Education [MoE], a member of The Kenya Association of Technical Training Institutions [KATTI]

### 2. How do I know if the college is a member of KATTI

Log in to [www.helb.co.ke](http://www.helb.co.ke) to download the list of colleges who are members of KATTI

### 3. How do you apply?

- a. Visit [www.helb.co.ke](http://www.helb.co.ke) to register.
- b. Log in, select and fill in the required Loan Application Form [either First Time or subsequent] for the respective program [TVET, Undergraduate or Continuing education] from the HELB website.
- c. Print two copies of the duly filled Loan Application Form.
- d. Have the form appropriately filled, signed and stamped by the relevant authorities and guarantors [for first time applicants only] and by the Dean [for subsequent applicants]
- e. Sign the form and attach all the necessary documents as indicated in the checklist appearing on the last page of the Loan Application Form.
- f. Present one copy of the duly completed Loan Application Form and all the attached supporting documents at any of the following:
  - i. Select Huduma Centres: Nairobi, Kakamega, Eldoret, Nakuru, Mombasa, Kisumu, Nyeri, Embu, Machakos, Kisii, Bungoma, Turkana, Meru, Kitui, Kericho, Nandi [Kapsabet], Thika, Garissa, Kitale and Muranga for free and secure delivery to HELB Head Office.
  - ii. HELB Student Centre on Mezzanine One [M1], Anniversary Towers, University Way, Nairobi
- g. Retain one copy of the duly filled loan application form

**Remember:** The HELB Loan Application process is free. Do not pay anyone to process your HELB Loan.

### 4. I don't have an ID card; can I apply for a HELB loan?

Unfortunately this is not possible at the moment. The national ID is proof of attainment of majority age. The HELB Loan Application form is a contract and legally we are not in a position to enter into a contract with a minor.

### 5. Is it compulsory to apply for a HELB loan?

No. You should apply for a HELB loan only if you are in need of the funds

### 6. What is the applicable interest rate and when does it start to accrue?

The interest is currently 4% per annum for direct entry students and 12% for all salaried applicants. The interest will start to accrue immediately after the first disbursement

### 7. Am I eligible for a loan in 2nd year if I did not apply in 1st year?

Yes you are. However one will be required to apply as a first time applicant during the first time applications window

### 8. What if I was awarded a loan but it is not enough, can I request for additional funds?

Yes, if you have a genuine need for additional funds, you can appeal amounts awarded to you by completing the loan review [appeal] form on [www.helb.co.ke](http://www.helb.co.ke)

### 9. If I discontinue my education, do I have to pay amount awarded to me even if I didn't complete my education?

Yes, once you are awarded a HELB loan, you will be required to fully repay the amount in accordance with the terms & conditions as well as the interest accrued thereafter and penalties incurred [if any]

### 10. I have a sibling who didn't qualify for HELB loan. Can I share the amount I was awarded with him/her then we share repayment?

Tuition is disbursed directly to the loan applicant's learning institution. However, any willing individual can help you repay your HELB Loan.

### 11. What if I can't remember my password for the HELB Online Portal?

Use the "forgot password" option available on the portal to recover your account

### 12. What if I can't see the HELB portal activation link on my email?

Please check your junk or spam emails

### 13. Why is my application form defective?

If any or all of the following are missing then the application is defective and your form will not be processed:

**a. Missing signatures and stamps:** i.e. applicants' signature, parents/guardian, priest, Chief or Assistant chief, Commissioner of Oaths or Magistrate and bank. Please note that signatures and stamping is mandatory.

**b. Missing documents:** if any of the documents on the checklist haven't been attached then the form will be termed defective. These include: KCSE result slip, Admission letter; if orphaned, copy/copies of parent/s death certificate; if sponsored in High school, a confirmation letter from the school or sponsor and a colored passport size photo which is to be attached to the form before submission.

**c. Scanned copies:** the forms to be submitted should be the original copies and not scanned copies, if one submits the scanned copy then it is termed defective since it's not the original.

**d. 2nd & Subsequent loan application forms:** All the subsequent application forms MUST be signed and stamped by the Dean of students.

## EMPOWERING DREAMS

[www.helb.co.ke](http://www.helb.co.ke) Anniversary Towers University Way  
+254711 052000 contactcentre@helb.co.ke f @HELBPAGE





# The East African University



## MAY 2017 INTAKE

### OUR MISSION

To transmit quality knowledge, conduct research and provide community service to the region and the world at large

### OUR PHILOSOPHY

To be a foundation of knowledge which produces holistic and all round graduates who shall be vanguards of change in the community

### OUR CORE VALUE

We at the East African University believe in

- Quality
- Integrity
- Firmness
- Honesty
- Relevance
- Professionalism
- Flexibility &
- Innovativeness

The university offers various programmes at undergraduate level i.e. Degrees, Diplomas and Certificates at very affordable rates

### Bachelor's degrees - 2 ½ years (8 semesters)

<b>School of Business management</b> Business management(BBM)options; Accounting banking and Finance sales & Marketing human Resource
<b>School of Computer Science &amp; Information Technology</b> Bachelors of Computer Science & Information Technology
Bachelors of Business Information technology(BBT)
<b>School Of Education bachelor of Education(BED-Arts)</b> Bachelors of education(BED - Arts) (regular)
Bachelors of Education (BED - Arts) (School Based)

### Post Graduate diplomas

Monitoring and Evaluation Education

### Bridging Courses

Mathematics  
Biology  
Chemistry  
Physics  
English

### DIPLOMA IN VARIOUS DOMAINS - 1 YEAR (3 SEMESTERS)

<b>School of Business management</b> Accounting
Sales and marketing
Banking and Finance
Human resource management
Actuarial Science
Islamic banking & Finance
Procurement and supplies management
Project planning and management
Management of NGOs
Credit Management
Governance and Ethics
Microfinance
Risk management and Insurance

### Credit transfers & Exemptions allowed (Applies only on school of business)

INTAKES - Tri semester: January - April, may - August & September - December

### ENTRY REQUIREMENTS:

#### Degree

C+(plus) and above at KCSE, a diploma from a recognized institution or professional certificates from examination bodies e.g KNEC, ACCA, KASNEB etc.

#### Diploma

C- (Minus) and above in KCSE, Certificates from recognized institutions or professional certificates from examination bodies e.g KNEC, ACCA, KASNEB etc.

**Certificate:** D+ (Plus) and above at KCSE

**Education:** Mean Grade of C+ in KCSE and a minimum of C+ in two teaching subjects. A level 2 principal passes & 5 credits at O level or grade III

**Accommodation:** The University provides accommodation facilities at Kshs. 12,000 per semester on first come first serve basis

**Meals:** meals are available on pay as you eat basis (Cafeteria)

**Transport:** transport is available for students from Isinya and Kitengela twice a day i.e morning and evening throughout the week to all students

**Location:** The University is on 100 acres of land on the eastside of the Nairobi - Kajado - Namanga Highway 40 (Forty) kilometers from Nairobi, the capital city of Kenya. It's about 10 Kms from Kitengela shopping Centre in Kajado County on the said highway opposite the Late Prof. Saitoti's farm.

For more information please contact us on:

**Main Campus:** +254 722 545 167, +254 771 688318

**Nairobi - City campus View park Towers, 2<sup>nd</sup> Flr, utalii lane +254 771 688365**

**Email:** info@teau.ac.ke

Application forms can be downloaded at [www.teau.ac.ke](http://www.teau.ac.ke)

**WE ADMIT  
GOVERNMENT  
SPONSORED  
STUDENTS**

<b>Department of Hospitality and tourism management</b> Leisure Tourism & hotel management
Food and beverage management
Nutrition and dietetics

<b>School of computer science and information technology</b> computer science and information technology
Business information technology

<b>School of education</b> Diploma in Education (Arts) school based
Diploma in Education (Arts)
Special needs Education
Early childhood development Education
Sport Science education

<b>Department of arts and social services</b> Development studies
Agriculture
Environ Mgmt & natural resources
Social work and comm development
Criminology and Criminal justice
Counselling and psychology
Diplomacy and international relations
County resource management
Event management
Conflict management and peace studies

### CERTIFICATES 8 MONTHS (2 SEMESTERS)

<b>School of Business management</b> Business management
<b>School of Computer science &amp; information technology</b> Computer science & information technology
Business information technology
<b>School of Education</b> ECDE Certificate
<b>Departments of Arts &amp; Social Sciences</b> Criminology & Criminal justice
Certificate in social work
<b>Department of Hospitality &amp; tourism Management</b> Leisure, tourism & Hotel management
Food and Beverage Management

## HIGHER EDUCATION AND CAREER GUIDE

### Passion Business

# Creating a fulfilling professional career out of innate talent

Do not wait until you finish school to figure out what your passion is and turn it into profitable business, expert advises

By MILLICENT MWOLOLO  
mmwololo@ke.nationmedia.com

Not all people are cut for white collar jobs, which demand a lot of academic training. In so many ways, talent can be turned into a professional job that gives both satisfaction and livelihood.

"Turning your passion into a career can bring out the best in you and can even be more rewarding than being employed," says Pauline Kiraithe, mentor and executive coach at IGNITE Youth Leadership Programme.

Ms Kiraithe is a human resource professional with over 20 years of practice. In the last two years, she has been working with young people to help them to identify their talents, nurture them and launch careers. "Young people do not have to wait until they finish school to figure out what their passion is and turn it into profitable business," she says.

Ms Kiraithe is also the founder of Talentgurus 254, which advises on this specific pathway to career. She

explains that young people should start developing their interests and working on them early enough. At IGNITE, she works with trainees aged 13 to 25 years.

She believes that identifying talent early enough gives youngsters the time to develop their innate skills and even get into professional training in a field that boosts their potential. "This highly impacts on their performance in the market," she shares.

Further, Kiraithe and her team identify the skills that the trainees need to develop in order to grow their talent, right from confidence building, and other soft skills like interpersonal communication.

Trainees are then taken through a rigorous 12 modular leadership skills programme, which runs for 60 hours that are covered in two weeks. The programme is hosted at the IGNITE Talent Academy in Kilimani, Nairobi.

Here, the participants reflect on their strengths and weaknesses, become more aware of their talents and how they can tap into their inner potential. "They also get

the self-belief that they can achieve their full potential," she adds.

But most importantly, the learners develop leadership skills and individual identity, where they are taken through how they can package themselves as a brand. A value addition to this package is the financial management and career planning skills.

Ms Kiraithe explains that this "breeds innovation and entrepreneurship, and gives way to new careers that were once seen as hobbies." These, she adds, could be drawing and painting, music, acting, public and motivational speaking, graphic design, writing, dancing and sports among others.

Early recognition of talent, Pauline says, helps one to tap into their full potential and grow in it. This, she notes, helps to reduce on the number of unemployed youths in Kenya and gives the country the synergy that drives economic growth.

"Besides, it helps to fill gaps that are left out in the current education curriculum, making young people more focused on personal development, more skills oriented and more aggressive in the marketplace," she notes.

### Tips for creating a passion business

#### • Start small

You don't have to put in big money in turning your passion into business. Start small by investing more of your time and talent; and less of financial capital. This way, you minimise risks.

#### • Find a void and fill it

Observe what other businesses are missing and use your business to fill a void in the marketplace. Discover how you can change your industry and why it is necessary. This way, you gain an edge over the existing players in the market.

#### • Volunteer

To be seen and noticed, volunteer your skills to your target market. This requires sacrifice, but it pays in the long-run as it is a way to market yourself.

#### • Be creative with money

A start-up today has more options for financing beyond big investors, bank loans and venture capitalists. First, develop a strategic marketing plan that details exactly how much you need to get started. Then, use social media to gather community support and market your brand before it comes to fruition.

#### • Start today, not tomorrow

You got the skills? Get going. A passion business is always with you in your hands and your brain. By defining what is working (and what is not), you will turn your dream project into a business model you can expand for profitable results. With patience and ingenuity, you too can find your passion project and turn it into a profit.

#### • Network and team up

You cannot go far on your own. Team up with market leaders in your industry; people who possess exceptional skills that complement yours. This way, you are going to grow.



## JANUARY, APRIL & MAY INTAKES ONGOING - TOWN CAMPUS

### Message from the Vice Chancellor

Welcome to the University of Eldoret. Over the years UoE has been recognised as a centre of excellence in science, agriculture and technology as expressed by its motto "flame of knowledge and innovation". Our graduates are increasingly sought after by top organizations both in Kenya and internationally. All our programmes are designed to give the highest quality of education but focused on the respective industry requirements.



**Prof. Teresa Akenga, PhD (UNSW, Australia), MSc. (Kenyatta), B.ED (Kenyatta), MRSC, MBS, MBA VICE CHANCELLOR**

The University of Eldoret is a center of learning in science and agricultural fields with the aim of developing leaders, entrepreneurs and innovators who will integrate into the needs and demands of the current marketplace.

**Vision:** *To be a premier University that is globally visible in knowledge generation and technological innovations*

**Mission:** *To provide high quality education in training, Science, Agriculture and Technology that promotes networking, partnerships and linkages with other institutions and industry*

The university has two campuses, Main Campus and Town Campus. The Eldoret Town Campus is situated in MUSCO Building, opposite Eldoret Sirikwa Hotel offering a serene and development based environment for studying and research.

#### INTAKES FOR TOWN CAMPUS

The town campus operates a trimester system and offers Full-time and Part-time courses

**Intake:** January, May and September  
**School based courses:** April, August & November  
**Mode of study:** Day time classes, evening and weekend classes are available.

#### ACADEMIC PROGRAMMES

<b>PhD programmes</b>	3 years; 2 semesters course work and 4 semesters research thesis
<b>Masters programmes</b>	2 years, 2 semesters course work and 2 semesters research and thesis
<b>Undergraduate programmes</b>	8 semesters
<b>Diploma Programmes</b>	4 semesters
<b>Certificate programmes</b>	2 semesters
<b>Bridging courses</b>	3 months

### DEGREE PROGRAMS

#### School of agriculture and Biotechnology

- PhD in Agricultural Extension Education
- PhD in Agricultural Economics
- Master of Science in Agricultural Extension Education
- Master of Science in Agricultural Economics

#### School of Business and Management Sciences

- Masters in Business Management (Options – Accounting, HRM, Purchasing, Marketing, Strategic Management)
- Bachelor of Business management ( Specializations: Accounting, Finance & Banking, Risk and Insurance Management, Marketing Management, Purchasing and Supplies Management, Information System, Human Resource Management, Enterprise Management and Business Administration)
- Bachelor of Hotel and Hospitality Management
- Bachelor of Tourism Management
- Bachelor of Science in Project Planning and Management
- Bachelor of Science in Entrepreneurship

#### School of Economics

- Bachelor of Arts in Economics

#### School of Education

- Bachelor of Education (Arts)

#### School of Environmental Studies

- PhD in Environmental Human Ecology
- MSc in Environmental Human Ecology
- Bachelor of Environmental Studies (social sciences)

### DIPLOMA PROGRAMS

#### School of Agriculture and Biotechnology

- Diploma in Agricultural Extension
- Diploma in Social Work and Rural Development
- Diploma in Agricultural Economics
- Diploma in Agriculture
- Diploma in Community Development
- Diploma in Food Science and Nutrition

#### School of Business and Management Sciences

- Diploma in Business Management
- Diploma in Tourism and Management
- Diploma in Travel and Tours Operation Management
- Diploma in Entrepreneurship
- Diploma in Project Planning and Management

#### School of Human Resource Management

- Diploma in Human Resource Management

- Diploma in Development Studies
- Diploma in Public Relations

#### School of Education

- Diploma in Education (Arts), Secondary Option
- Diploma in Early Childhood and Primary Education

#### School of Environmental studies

- Diploma in NGO and Environmental Project Management
- Diploma in Shared Resources and Dispute Resolution
- Diploma in Environmental Education
- Diploma in Disaster Preparedness and Risk Management
- Diploma in Integrated Watershed Management
- Diploma in Water and Sanitation Management
- Diploma in Intellectual Property Rights, Legislation and Enforcement)

### SHORT COURSES

#### School of Environmental studies

- Environmental Impact Assessment
- Water Sanitation and Hygiene Education

#### School of Science

- Bridging courses in Mathematics, Chemistry, Physics and Biology



### CONTACT DETAILS:

Director  
 University of Eldoret Town Campus  
 P.O. Box 1125-30100, Eldoret, Kenya  
 Email: [coordtowncampus@uoeld.ac.ke](mailto:coordtowncampus@uoeld.ac.ke)

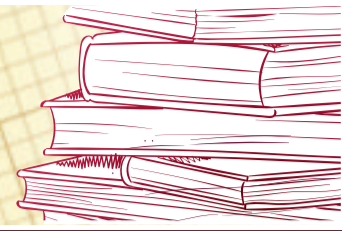
Tel: 0788 232 004  
 Website: [www.uoeld.ac.ke](http://www.uoeld.ac.ke)

Registrar Academics  
 University of Eldoret  
 P.O. Box 1125-30100, Eldoret, Kenya  
 Email: [registraracademics@uoeld.ac.ke](mailto:registraracademics@uoeld.ac.ke) or [admissions@uoeld.ac.ke](mailto:admissions@uoeld.ac.ke)



# AFTER KCSE

## HIGHER EDUCATION AND CAREER GUIDE



## Whatever your score, IAT will help you find your path

For years, society kept piling pressure on KCSE candidates to attain university entry marks. At some point, the resulting “do or die” situation encouraged unorthodox means of getting these marks.

Thanks to efforts by the Cabinet Secretary for Education, Dr Fred Matiang’i, to restore sanity in the system, this may soon come to an end.

University education has been overrated in this country. While other nations of the world have been promoting TVET education, here, the focus has rested too much on university studies at the expense of other levels of skills development. UNESCO defines TVET as “those aspects of the educational process involving, in addition to general education, the study of technologies and related sciences and the acquisition of practical skills, attitudes, understanding and knowledge relating to occupation in various sectors of economic life”. Thus, TVET training provides knowledge and skills required in the world of work. A developing economy such as Kenya needs more hands-on people.

Career choice is more often than not taken very simply, yet it affects the person for the rest of their life

The education system in Kenya needs to go a step further to help students know what careers best suits them. It’s painful to see many students go through a course without passion and in the end switch to careers totally different from what they trained in. This is a waste of time and money for the student, the parent and an opportunity cost to others.

Professor Carl Jung, in his research, proved that success in one’s career was directly related to their personality type.

Career choice is more often than not taken very simply, yet it affects the person for the rest of their life. Valuable time, effort and money would be saved if students got professional advice on career choice. The Institute of Advanced Technology (IAT) has been conducting career-mapping and personality profiling since 2009. The exercise has proven to be an eye-opener for many youths who will forever be grateful for the opportunity that ended their dilemma. This is usually done before admission to a diploma, certificate or other professional courses at IAT campuses located in Nairobi, Mombasa and Nakuru.

IAT can help you understand your personality and suitable career regardless of the grade you got in KCSE, and then walk with you to your success. You can walk in to any IAT Campus near you and book for a career-mapping session. Your success is our responsibility.

- Peter Wairagu, Country Manager, IAT



HR and careers consultant Mr Epimach Maritim offering professional advise at a past forum.

PHOTO | COURTESY

## On-demand careers options that don’t necessarily require degrees

By Evans Ongwae  
ongwae@ke.nationmedia.com

Worry not if you did not make university entry point in KCSE. There are numerous careers on demand right now, that you could pursue and attain great success in life, says human resources and careers consultant Mr Epimach Maritim.

For someone who is constantly

in touch with employers through his Outresources HR Consulting firm, Mr Maritim would know better.

He says: “As Kenyans, we have defined success to be equivalent to qualifying to join a university, and anybody who does not meet this threshold is considered a failure. This is a very wrong approach, as it creates the perception that those joining institutions other than university are ‘failures’. This is not correct.”

Mr Maritim clarifies that some technical courses require a high level of aptitude, equivalent to what is needed to join university. “We therefore need to redefine our measures of success and stop branding those who may not have attained the cut-off for university courses as ‘failures’.”

Among the careers that the present market will readily absorb and may not necessarily require university education include those in technical fields, the arts, the agricultural value chain, and cultural activity.

On-demand technical careers, according to Mr Maritim, include dental hygienists, web developers, electricians, plumbers, heavy equipment operators, medical lab technicians and aircraft technicians. Others are civil engineering technicians, building foremen, masons, network support specialists, painters and wood technicians (all aspects of manipulating

wood into furniture). Agricultural careers worth considering include positions of plant breeders, soil surveyors, veterinary technicians, food conservation technicians, ranch farmhands, livestock officers, land preparation officers, animal technicians and tractor mechanics among others.

In arts and culture, careers in acting and script writing, and working as producers, library assistants, make-up artists, barbers, photographers, professional nannies, gym instructors, hairdressers, housekeepers, undertakers, disk jockeys, dancers, sports coaches, waiters, and food technologists are gaining greater recognition. Many of these can support decent lifestyles if pursued professionally, which is what the market is looking for.

These career options, says Maritim, currently suffer a dire shortage of skilled manpower, yet they are on demand. Training for many of these can be pursued in private colleges and middle level government institutions. Mr Maritim suggests that the government could promote these studies further by leading the way in championing the “build Kenya, buy Kenya” policy by deed.

He says for instance, that if the government ordered that all furniture in its institutions be made in Kenya, “there would not be enough carpenters to meet the demand”.

**IAT** | EDUCATION EXPERTS  
Institute of Advanced Technology



With my grade do I have a career option?  
Which college can I trust to start my career?

Irrespective of your grade,  
IAT has a course for you.

### Diploma

- \*ICT Management
- \*Business Administration
- \*Web Development
- \*Internet System Security
- \*Business & Information Technology

### Certificate

- \*ICDL
- \*Microsoft Office Specialist
- \*Business & Information Technology
- \*Web Design
- \*Graphic Design

Enroll or Call Us Now:

Pension Towers: 0720 692 415  
Nakuru Campus: 0718 085 483  
Ecobank Towers: 0720 789 465  
Hurlingham Campus: 0724 418 741

Mombasa Campus: 0739 251 680  
Kasarani Campus: 0712 848 706  
Buruuru Towers: 0724 817 975  
Rongai Campus: 0701 898 230

Institute of Advanced Technology  
@IAT  
registrar@iat.ac.ke  
www.iat.ac.ke





# OL'LESSOS TECHNICAL TRAINING INSTITUTE COLLEGE OF CHOICE

Tel: 020-2395160 P.O BOX 210, 30302, LESSOS.  
 Fax: 020-2395161 E-mail: ollessostechical@gmail.com  
 Website: www.ollessostechical.ac.ke



## JAN/MAY & SEPTEMBER INTAKES



ALPHONSE K. MISOI, PRINCIPAL

Established in 1987, Ol'lessos Technical Training Institute (OTTI) is a middle level college of Technical, Vocational, Education and Training (TVET) and Research. It is registered as a public institution under the Ministry of Education, Science and Technology: State Department of Vocational and Technical Training. The Institute is located in good serene learning environment suitable for offering skills and competency, just along Kapsabet - Nabkoi Road in Nandi County and 1 km from Lessos market

Being an ISO certified institution in various accredited courses that are market driven, the institute has focused its attention in the development of ultra modern infrastructure and state of art equipments tools in its seven departments; Automotive and Mechanical Department, Building and Civil Engineering Department, Applied Science, Electrical and Electric Engineering, Medical Laboratory, Business Studies and Information and Communication Technology Department. This has

positively impacted on the steady growth of student population of over 2000 studying in various levels at Higher Diploma, Diploma, Craft, artisan, capacity building and other flexible blended trainings.

In realization of quality training and other national mandates the institute is endowed with highly qualified experienced and dedicated team of staff. The day to day running of the institution is enhanced by a well structured functional management and administrative organization that is in line with the relevant legislative document and stationary requirement.

Currently, the institute in its persued of the vision 2030 and the achievement of sustainable millennium development goals has promoted access to training linkages with the industries, organization and other relevant stakeholders with similar mandates.

In all this, the government has played a centre role in facilitating various fundings of relevant human resources.

Why wait apply now!!!

MAIN CAMPUS				
APPLIED SCIENCE DEPARTMENT				
COURSE	REQUIREMENT	DURATION	INTAKE	EXAM BODY
Diploma In Chemical Engineering	KCSE Mean Grade C-	3 Years	JAN/SEP	KNEC
Dip. Applied Biology	KCSE Mean Grade C-	3 Years	JAN/SEP	KNEC
Dip. Analytical Chemistry	KCSE Mean Grade C-	3 Years	JAN/SEP	KNEC
Dip. Medical Engineering	KCSE Mean Grade C With D+Maths/,Phy	3 Years	JAN/SEP	KNEC
Diploma In Applied Statistics	KCSE Mean Grade C-	3 Years	JAN/SEP	KNEC
Diploma In Petroleum Engineering	KCSE Mean Grade C-	3 Years	JAN/SEP	KNEC
Diploma In General Agriculture <b>Mod 1,</b>	KCSE Mean Grade C-	1 Year	JAN/SEP	KNEC
Diploma In Entrepreneurial Agriculture <b>Mod 1,</b>	KCSE Mean Grade C-	1 Year	JAN/SEP	KNEC
Dip. Food & Beverage Sales <b>Module 1</b>	KCSE Mean Grade C-	1 Year	JAN/SEP	KNEC
Dip. Dietetic Management <b>Module 1</b>	K.C.S.E Mean Grade C-	1 Year	JAN/SEP	KNEC
Diploma In Catering Accommodation Operation <b>Mod 1,</b>	KCSE Mean Grade C-	1 Year	JAN/SEP	KNEC
Diploma In Food Technology <b>Mod 1</b>	KCSE Mean Grade C-	1 Year	JAN/SEP	KNEC
Certificate In Catering Accommodation Operation <b>Mod 1</b>	K.C.S.E Mean Grade D+	1 Year	JAN/SEP	KNEC
Certificate Food & Beverage <b>Module 1,</b>	K.C.S.E Mean Grade D+	1 Year	JAN/SEP	KNEC
Certificate in science lab technology	K.C.S.E Mean Grade D+	2 Years	MAY	KNEC
Certificate in General Agriculture	K.C.S.E Mean Grade D+	2 Years	MAY	KNEC
Artisan In General Agriculture	K.C.S.E Mean Grade D-	1 Year	JAN	KNEC
Artisan Food & Beverage	K.C.S.E Mean Grade D-	1 Year	JAN	KNEC
INFORMATION AND COMMUNICATION TECHNOLOGY DEPARTMENT				
Diploma In Information And Communication Technology (DICT)	KCSE Mean Grade C	6 Months	JAN/MAY	KNEC
Certificate In information Technology (CIT) <b>Mod 1</b>	K.C.S.E Mean Grade D+	6 Months	JAN/MAY	KNEC
Diploma In Computer Studies (DCS)	KCSE Mean Grade C-	3 Years	JAN/SEP	KNEC
Diploma In Information And Communication Technologist (DICT)	KCSE Mean Grade C+	6 Months	JAN/MAY	KASNEB
Diploma In Library Information Science (DLIS)- Regular	KCSE Mean Grade C-	2 Years	JAN/SEP	KNEC
Craft Certificate In information Studies (LOIS) <b>Mod 1</b>	KCSE Mean Grade D	6 Months	JAN/MAY	KNEC
Information And Communication Technology Technician (ICTT) - <b>Level 1</b>	K.C.S.E Mean Grade D+	6 Months	JAN/MAY	KASNEB
MEDICAL LABORATORY DEPARTMENT				
Diploma In Medical Laboratory Tech.	K.C.S.E. Mean Grade C Plain With C In Maths / Phys, Eng /Kisw ,Bio & Chem.	3yrs	JAN/SEP	KMLTTB/ KNEC
Diploma in Pharmaceutical Technology	K.C.S.E. Mean Grade C Plain With C In Maths /Phy, Eng, Bio & Chem	3 years	JAN/SEP	KNEC
BUSINESS STUDIES DEPARTMENT				
Artisan in Storekeeping (Regular)	KCSE Mean Grade D-	1 Year	JAN	KNEC
Certificate Secretarial Studies Single & Group	KCSE Mean Grade D Plain	1 Year	JAN/SEP	KNEC
Certificate In Marketing <b>Mod 1</b>	KCSE Mean Grade D,	6 Months	JAN/MAY	KNEC
Certificate Secretarial Studies <b>Mod 1</b>	KCSE Mean Grade D+	6 Months	JAN/MAY	KNEC
Certificate In Supply Chain Management <b>Mod 1</b>	KCSE Mean Grade D Plain	6 Months	JAN/MAY	KNEC
Certificate In Business Management <b>Mod 1</b>	KCSE Mean Grade D Plain	6 Months	JAN/MAY	KNEC
Certificate In Human Resource Management <b>Mod 1</b>	KCSE Mean Grade D Plain	6 Months	JAN/MAY	KNEC
Certificate In Social Work <b>Mod 1</b>	KCSE Mean Grade D+	1 Year	JAN/SEP	KNEC
Certificate In Project Management <b>Mod 1</b>	KCSE Mean Grade D Plain	1 Year	JAN/SEP	KNEC
Certificate In Clerical Operations <b>Mod 1</b>	KCSE Mean Grade D Plain	1 Year	JAN/SEP	KNEC
Diploma In Supply Chain Management <b>Mod 1,</b>	KCSE Mean Grade C	6 Months	JAN/MAY	KNEC
Diploma In Social Work And Development <b>Mod 1</b>	KCSE Mean Grade C	6 Months	JAN/MAY	KNEC
Diploma In Secretarial Studies <b>Module 1</b>	KCSE Mean Grade C	1 Year	JAN/SEP	KNEC
Diploma In Human Resource Management <b>Mod 1</b>	KCSE Mean Grade C	6 Months	JAN/MAY	KNEC
Diploma In Business Management <b>Mod 1</b>	KCSE Mean Grade C	6 Months	JAN/MAY	KNEC
Diploma In Marketing <b>Mod 1</b>	KCSE Mean Grade C	6 Months	JAN/MAY	KNEC
Diploma In Co-Operative Management ( Regular)	KCSE Mean Grade C	6 Months	JAN/MAY	KNEC
Diploma In Co-Operative Management <b>Mod 1</b>	KCSE Mean Grade C	6 Months	JAN/MAY	KNEC
Diploma In Accountancy ( Regular)	KCSE Mean Grade C	2 years	JAN	KNEC
Certificate in accountancy	KCSE Mean Grade D+,	2 Years	JAN	KNEC
Certificate in Co-Operative Management <b>Mod 1</b>	KCSE Mean Grade D+,	6 months	JAN/MAY	KNEC
AUTOMOTIVE ENGINEERING DEPARTMENT				
Artisan Certificate In Motor Vehicle Mechanics	KCSE Mean Grade D Plain	1 Year	JAN	KNEC
Certificate in Automotive <b>mod 1</b>	KCSE Mean Grade D+	6 months	JAN/SEP	KNEC
Diploma In Mechanical (Plant Option) Tep	Mean Grade C-With C- in Maths /Phy	3 Year	JAN	KNEC
ELECTRICAL ENGINEERING DEPARTMENT				
Diploma In Electrical & Electronics Eng. (Power Option) <b>Mod 1</b>	KCSE Mean Grade C-	1 Year	JAN/SEP	KNEC
Craft Cert In Electrical & Electronics Tech. (Power Option) <b>Mod 1</b>	KCSE Mean Grade D+,	1 Year	JAN/SEP	KNEC
Artisan In Electrical Installation	KCSE Mean Grade D-	1 Year	JAN	KNEC
BUILDING AND CIVIL ENGINEERING DEPARTMENT				
Diploma In Quantity Surveying	KCSE Mean Grade C- With C- In Maths, Phys/Chem/Eng	3 Years	JAN	KNEC
Diploma In Land Surveying	KCSE Mean Grade C-. With D+ In Maths, Phy/Geo	3 Years	JAN	KNEC
Diploma In Civil Engineering <b>Mod 1</b>	KCSE Mean Grade C- With C- In Maths, Physics/Chem/Eng	1 Year	JAN/SEP	KNEC
Diploma In Building Technology <b>Mod 1</b>	KCSE Mean Grade C- With C- In Maths, Physics/Chem/Eng	1 Year	JAN/SEP	KNEC
Certificate In Building Technology <b>Mod 1</b>	K.C.S.E. Mean Grade D+ With D+ In Maths/Phy /Chem	1 Years	JAN/SEP	KNEC
Certificate in Land Surveying	K.C.S.E. Mean Grade D+ With D+ In Maths, Phy/Geo	2 Years	MAY	KNEC
Artisan in plumbing	K.C.S.E Mean Grade D-	1 YEAR	JAN	KNEC

KAPSABET TOWN CAMPUS				
BUSINESS DEPARTMENT				
COURSE	REQUIREMENTS	DURATION	EXAM BODY	INTAKE
1 Diploma in Supplies Chain Management	KCSE Mean Grade C-	6 Months	KNEC	JAN/MAY
2 Diploma in Accountancy	KCSE Mean Grade C-	2 Years	KNEC	JAN / MAY
3 Diploma in Co-operative Management	KCSE Mean Grade C-	2 Years	KNEC	JAN / MAY
4 Diploma in Human Resource Management (Module I)	KCSE Mean Grade C-	6 Months	KNEC	JAN / MAY
5 Diploma in Business Management (Module I)	KCSE Mean Grade C-	6 Months	KNEC	JAN / MAY
6 Diploma in Social Work and Community Development (Mod I)	KCSE Mean Grade C-	6 Months	KNEC	JAN / MAY
7 Certificate in Supplies Chain Management (Module I)	KCSE Mean Grade D	6 Months	KNEC	JAN / MAY
8 Certificate in Human Resource Management (Module I)	KCSE Mean Grade D	6 Months	KNEC	JAN / MAY
9 Certificate in Certificate in Business Management (Module I)	KCSE Mean Grade D	6 Months	KNEC	JAN / MAY
10 Certificate in Social Work and Community Development (Mo I)	KCSE Mean Grade D	6 Months	KNEC	JAN / SEPT
11 Single and Group Secretarial	KCSE Mean Grade D-	6 Months	KNEC	JAN / MAY
12 Certificate in Marketing (Module I)	KCSE Mean Grade D	6 Months	KNEC	JAN / MAY
13 CPA Sections	KCSE Mean Grade C+(C+ in Maths, English/ATC II	6 Months	KASNEP	JAN / MAY
14 Diploma in Banking And Finance	KCSE Mean grade C-	6 Months	KNEC	
INFORMATION COMMUNICATION TECHNOLOGY (ICT) DEPARTMENT				
1 Diploma in Information Communication Technology (Module I)	KCSE Mean Grade C-	6 Months	KNEC	JAN / MAY
2 Diploma in Information Studies	KCSE Mean Grade C-	2 Years	KNEC	SEPT/JAN
3 Certificate in Information Communication Technology (Module I)	KCSE Mean Grade D	6 Months	KNEC	JAN / MAY
4 Certificate in Library Information Studies (Module I)	KCSE Mean Grade D	6 Months	KNEC	JAN / MAY
5 Information Communication Technology Technician	D+	6 Months	KNEC	JAN/MAY
KIPSINENDE TECHNICAL TRAINING INSTITUTE CAMPUS				
BUSINESS STUDIES DEPARTMENT				
1 Diploma in Supplies Chain Management (Module I)	KCSE Mean Grade C-	6 Months	KNEC	JAN/MAY
2 Diploma in Accountancy	KCSE Mean Grade C-	2 Years	KNEC	JAN/MAY
3 Diploma in Co-operative Management	KCSE Mean Grade C-	2 Years	KNEC	JAN/MAY
4 Diploma in Human Resource Management (Module I)	KCSE Mean Grade C-	6 Months	KNEC	JAN/MAY
5 Diploma in Business Management (Module I)	KCSE Mean Grade C-	6 Months	KNEC	JAN/MAY
6 Diploma in Social Work and Community Development (Mod I)	KCSE Mean Grade C-	6 Months	KNEC	JAN/MAY
7 Certificate in Supplies Chain Management (Module I)	KCSE Mean Grade D	6 Months	KNEC	JAN/MAY
8 Certificate in Human Resource Management (Module I)	KCSE Mean Grade D	6 Months	KNEC	JAN/MAY
9 Certificate in Certificate in Business Management (Module I)	KCSE Mean Grade D	6 Months	KNEC	JAN/MAY
10 Certificate in Social Work and Community Development (Mod I)	KCSE Mean Grade D	6 Months	KNEC	JAN/SEPT
11 Artisan in Storekeeping	KCSE Mean Grade D-	1 Year	KNEC	JAN/MAY
12 Certificate in Marketing (Module I)	KCSE Mean Grade D	6 Months	KNEC	JAN/MAY
13 Diploma in Marketing (Module I)	KCSE Mean Grade C-	6 Months	KNEC	JAN/MAY
INFORMATION COMMUNICATION TECHNOLOGY (ICT) DEPARTMENT				
1 Diploma in Information Communication Technology (Module I)	KCSE Mean Grade C-	6 Months	KNEC	JAN / MAY
2 Diploma in Information Studies	KCSE Mean Grade C-	2 Years	KNEC	SEPT/JAN
3 Certificate in Information Communication Technology (Module I)	KCSE Mean Grade D	6 Months	KNEC	JAN / MAY
4 Certificate in Library Information Studies (Module I)	KCSE Mean Grade D	6 Months	KNEC	JAN / MAY
AUTOMOTIVE AND MECHANICAL ENGINEERING DEPARTMENT				
1 Diploma In Mechanical Eng. (Plant Option) Tep	Mean Grade C- With C in Maths /Physics	3 year	KNEC	JAN / MAY
2 Diploma In Automotive Engineering <b>Module 1</b>	Mean Grade C-, with C- In Maths And Physics	1 Year	KNEC	JAN/SEPT
3 Artisan Certificate In Motor Vehicle Mechanics	Mean Grade D Plain	1 Year	KNEC	JAN
ELECTRICAL AND ELECTRONICS ENGINEERING DEPARTMENT				
1 Artisan In Electrical Installation <b>Level 2</b>	K.C.S.E. D-	1 Year	KNEC	JAN
2 Craft in Electrical & Electronics tech. Install. (Mod I)	K.C.S.E Mean Grade D+ with D+ in Maths, physics	1 Year	KNEC	JAN/SEPT.
3 Dip. Eng. Electrical & electronics eng. (power mod I)	K.C.S.E Mean Grade C- with C- in Maths, Physic	1 Year	KNEC	JAN/SEPT.



All Correspondence should be addressed to the Principal Ol'lessos Technical Training Institute, P.O Box 210 Lessos. Please send your Academic certificates enclosed with a Non refundable Money Order of 300/= APPLY USING ABOVE EMAIL/WEBSITE



## HIGHER EDUCATION AND CAREER GUIDE

### Technical Vocational Education and Training

# Why the sudden buzz on technical training

Vision 2030 proposes intensified application of science, technology and innovation to promote national development

By EVANS ONGWAE  
eongwae@ke.nationmedia.com

In less than 15 years, Kenya is expected to achieve the status of a newly industrialising, “middle-income country providing a high quality life to all its citizens”.

Education and training is one of the seven social sectors primed to contribute towards this transformation by helping unlock the country’s development potential.

Technical and vocational training is among the pathways expected to contribute towards the sharpening of Kenyan brains. Hence the development of a national TVET system, whose specific objective are to:

- Provide increased training

opportunities for school leavers and enable them to be self-supporting;

- Develop practical skills and attitudes that will lead to income earning activities in both urban and rural areas;
- Provide technical knowledge, vocational skills and attitudes necessary for manpower development;
- Produce skilled artisans, craftsmen, technicians and technologists for both the formal and informal sectors.

The overall goal of the national TVET programme is to improve access, quality and relevance of skills development.

Vision 2030 proposes intensified application of science, technology and innovation (STI) to raise productivity and efficiency levels across the three

pillars. It recognises the critical role played by research and development in accelerating economic development in all the newly industrialising countries of the world.

The government promises to create and implement an STI policy framework to support Vision 2030. More resources will be devoted to scientific research, technical capabilities of the workforce, and in raising the quality of teaching mathematics, science and technology in schools, polytechnics and universities.

**55%** The current transition rate from primary education to secondary

This strategy avers that Kenya’s socio-economic development should be hinged on robust science and technology management with a view to achieving a knowledge-based society.

To this end, the country intends to create a globally competitive and adaptive human resource base to meet the

requirements of a rapidly industrialising economy. This will be done through life-long training and education.


The government plans to establish new technical training institutions, as well as enhance closer collaboration between industry and training institutions.

Data shows that graduates of primary level education have averaged more than 600,000 every year in recent times. Out of these, only 55 per cent or 350,000 proceed to secondary schools. The rest either join youth polytechnics or the informal sector.

The existing capacity and capability in middle level colleges (both private and public) and youth polytechnics are inadequate to absorb the remaining KCPE and KCSE graduates. These are target groups whose skills development will have to be enhanced through a well-harmonised, flexible and demand-driven technical training system in order to ensure that they are enabled to contribute meaningfully to economic development.


In spite of the enormous gains made in the development of technical and

CONTINUED ON PAGE 14



**NORTH EASTERN NATIONAL POLYTECHNIC**

P.O. Box 329-70100, Garissa, | Tel: 0716 061788 | Fax: 046 2102488  
Email: info@northeasternpoly.ac.ke | northeasternpoly@yahoo.com  
Web: www.northeasternpoly.ac.ke



---

**JANUARY INTAKE 2017**

(NATIONAL CENTRE OF EXCELLENCE IN AUTOMOTIVE ENGINEERING)

S/NO	REGULAR COURSES	MINIMUM ENTRY GRADE	COURSE DURATION	EXAM BODY
<b>A HIGHER DIPLOMA PROGRAMME</b>				
1	Secretarial Management	Diploma in Secretarial Studies or advanced certificate in single & group secretarial stage 3	1 YEAR	KNEC
2	Human Resource Management	A relevant degree with C+ in KCSE/Relevant Diploma	3 TERMS	KNEC
<b>B DIPLOMA PROGRAMMES</b>				
1	Diploma in Secretarial Studies	KCSE C- (Minus) C- in Eng	2 Terms	KNEC
2	ATD	KCSE C- (Minus)	2 Terms	KSNEB
3	CPA	Section I C+, C+ in Eng & Math	2 Terms	KSNEB
4.	Diploma in Information Communication Technology Mod I to III	KCSE C- (Minus)	2 Terms	KNEC
5.	Diploma in Information Studies –Library(Block)	KCSE C- (Minus)	2 Years	KNEC
6.	Diploma in Motor Vehicle Mechanics Mod I	KCSE C- (Minus)	1 Year	KNEC
7.	Diploma in Electrical & Electronics Technology Mod I	KCSE C (Plain)	1 Year	KNEC
8	Diploma in Building Technology Mod I	KCSE C- (Minus)	1 Year	KNEC
9.	Diploma in Project Management	KCSE C- (Minus)	2 Years	KNEC
10.	Diploma in Community Development & Social Work Mod I to III	KCSE C- (Minus)	2 Terms each	KNEC
11.	Diploma in Human Resource Management (Block)	KCSE C- (Minus)	1 Year	KNEC
12.	Diploma in Human Resource Management Mod I to III	KCSE C- (Minus)	2 Terms each	KNEC
13	Diploma in Nutrition & Dietetics Mod I to III	KCSE C- (Minus)	2 Terms each	KNEC
<b>C CERTIFICATE PROGRAMMES</b>				
14.	Certificate in Information Communication Technology Mod I and II	KCSE D (Plain)	2 Terms each	KNEC
15	Certificate in Computerized Secretarial Studies Mod I & II	KCSE D+ (plus)	2 Terms each	KNEC
21.	Certificate in Community Development & Social Work (Block)	KCSE D (Plain)	1 Year	KNEC
22.	Certificate in Human Resource Management Mod I to II	KCSE D (Plain)	2 Terms each	KNEC
23.	Certificate in Nutrition & Dietetics Mod I to II	KCSE D (Plain)	2 Terms each	KNEC
24.	Certificate in Secretarial Single & Group Studies	KCSE D- (Minus)	2 Terms	KNEC
25.	Craft Certificate in Electrical & Electronics Technology Mod I	KCSE D+ (plus)	1 Year	KNEC
26.	Craft Certificate in Building Technology Mod I	KCSE D (Plain)	1 Year	KNEC
27.	Certificate in Motor Vehicle Mechanics Mod I	KCSE D (Plain) & Above	1 Year	KNEC
<b>D ARTISAN PROGRAMMES</b>				
28.	Artisan in Motor Vehicle Mechanics	KCPE & Above	2 years	KNEC
29.	Artisan in Garment Making	KCPE & Above	2 years	KNEC
<b>E VOCATIONAL/PART TIME</b>				
30.	Hair Dressing & beauty Therapy Grade III	Open	3 Terms	NITA
31.	Dress Making & Tailoring (Skill Development)	Open	2 Terms	NITA
32.	Certificate in Advanced Computer Packages	Open	2 Months	NENAP
33.	Computer packages	Open	1 Month	NENAP
34.	Certificate in Solar installation	Open	1 Term	NENAP
35.	Certificate in Electrical installation	Open	1 Term	NENAP
36.	Certificate in Solar Water Heating	Open	1 Term	NENAP

**FEES FOR REGULAR COURSES**

Day	TERM I	TERM II	TERM III	TOTAL
Boarding	Kshs 12,030	Kshs 9,100	Ksh 8,800	Ksh 29,930
	Kshs 20,380	Kshs 15,800	Ksh 15,500	Ksh 51,680

**NB:** All Full fees should be deposited to: NEP TTI, KCB Bank Account No.110 780 1818 - Garissa Branch. Send your application enclosing photocopies of National ID/ (both sides) KCSE/Certificate/Results Slip/School leaving/Birth Certificates, together with money order of Kshs 500 Non - refundable Applicable fee.

**The Principal**  
North Eastern National Polytechnic  
P.O. Box 329 - 70100 - GARISSA  
Tel. Mobile 0716061788:FAX: 046 - 2102488:Website www.northeasternpoly.ac.ke:  
Email: neptti@yahoo.com, info@northeasternpoly.ac.ke

# Did you know that for **Kshs.2000** per month,

A school of your choice can receive **16 assorted Newspaper** copies per week from Nation Media Group?

*This has proved to develop students' language and reading skills*

**'Improving literacy in the Counties'**



For more details call  
Caroline on 0729 069798  
Email cmani@ke.nationmedia.com



# Kenya Highlands University

(Formerly Kenya Highlands Evangelical University)

**INTAKES; JANUARY, MAY & SEPTEMBER**

### About KHU

Welcome to KHU! Located on the western edge of Kericho Town in Kericho County. KHU is a chartered private University that offers quality programs. KHU is determined to keep affordable costs to enable those who otherwise would have to forgo a university Education.

### Mode of Study:

Regular, Evening, Weekends and School Based

## PROGRAMS

### MASTERS PROGRAMS

- Masters in Business Administration.
- MA- in Philosophy and Religion.

### DEGREE COURSES

- Bachelor of Theology
- Bachelor of Business Management: Options; HRM, Strategic Management, Marketing, Banking and Finance, Accounting.
- Bachelor of Education(Arts)
- Bachelor of Early Childhood Education
- Bachelor of Business Information Technology
- Bachelor of Information Technology.
- Bachelor in Computer Science
- Bachelor in Library and Information Science
- Bachelor of Arts in Christian Education
- Bachelor of Arts in Counseling Psychology.
- Bachelor in Development Studies
- Bachelor of Public Administration and Policy Development.
- Bachelor of Science (Record Management and Information Technology)
- Bachelor of Procurement and Supply Chain Management.

### DIPLOMA COURSES

- Diploma of Theology
- Diploma of Business Management
- Diploma of Education (Arts)
- Diploma in Computer Science
- Diploma in Information Technology
- Diploma in Counseling Psychology
- Diploma in Procurement Management
- Diploma in Records Management
- Diploma in Journalism/Media Communication
- Diploma in Criminology

- Diploma in Cohesion, Peace and Reconciliation
- Diploma in Public Administration and Policy Development
- Diploma in Hospitality and Tourism Management
- Diploma in Human Resource Management
- Diploma in Sales and Marketing Management
- Diploma in Project Planning and Management
- Diploma in Veterinary Science
- Diploma in Entrepreneurship and Information Technology

### CERTIFICATE COURSES

- Certificate in Library Studies
- Certificate in Information Technology
- Certificate in Business Management.
- Certificate in Criminology
- Computer Science-Professional Certification (CSPC)
- Cisco Certified Network Associate (CCNA)
- ICDL- International computer Driving License
- KATC I & II Intermediate and Final level
- CPA Parts I, II & III

### ADMISSION REQUIREMENTS

- MASTERS-** 2<sup>nd</sup> Class upper division or 2<sup>nd</sup> class lower Division with 2yrs working experience.
- DEGREE -** C+ & above or a Diploma with a Credit from recognized institution.
- DIPLOMA -** C and above or a certificate from a recognized institution
- Certificate -** D+ and above

Application forms are available in Main Campus and Bethany Building 4th floor in Kericho Town or can be downloaded or applied online at [www.khu.ac.ke](http://www.khu.ac.ke).

Applications should be filled and returned to Registrar Kenya Highlands University.

### CONTACTS

0716 477 588, 0718 395 632, 0716,477,574 CALL OR TEXT FOR MORE INFORMATION

Email: [registrar@khu.ac.ke](mailto:registrar@khu.ac.ke) or [admission@khu.ac.ke](mailto:admission@khu.ac.ke)

WEBSITE: [www.khu.ac.ke](http://www.khu.ac.ke),



THE KENYA INSTITUTE OF MANAGEMENT



## There are many Diplomas and then there is the KIM Professional Diploma in Management

Course Title	Entry Requirements	Duration	Fees (KES)
BRIDGING COURSE	KCSE Mean Grade D or Equivalent	3 months	16,000
Certificate Course in Computer Applications	KCSE Mean grade D+ with D+ in English and D+ in Mathematics/ Accounting/Commerce/ Economics/Business Studies	6 months (2 Semesters 3 months each)	19,000 Per Sem Total: 38,000

### DIPLOMA COURSE IN MANAGEMENT

This course is intended to equip the learner with a wide range of skills applicable in all areas of management universally. The course consists of 3 sections and a total of 18 units.

Section I: 6 core units	KCSE Mean grade C-; with C- in English and C- in Mathematics/ Accounting/Commerce/ Economics/ Business Studies	6 months	29,500
Section II: 4 core units and 2 optional specializations	Degree/Higher Diploma from a recognized Institution  3rd and 4th year University students	6 months	35,000
Section III: 6 specializations	Progression from DCM II	6 months	39,000

### Specialization areas

Business Management | Human Resource Management  
Marketing Management | Project Management | Purchasing & Supplies Management  
Public Relations Management | Archives and Records Management | Office Management

**Intake Ongoing**

Register for Certificate Course in Computer Applications:  
Duration - Five (5) weeks at KES. 5,000

## NOW OFFERING

In our 22 Branches Countrywide

### KIM Professional Certification Courses

Strategic Management & Leadership | Supervisory Skills Development  
Automation of Records & Information Systems  
Monitoring & Evaluation | Quality Management  
Entrepreneurship | Environment Impact Assessment

### KASNEB Courses

CPA & CS: Section 1- 6

### Certified Human Resource Management Professional (CHRP) Tuition and Examination

Parts I, II, III

### OUR BRANCHES

Nairobi - 0722 200 864	Kapsabet - 0712 199 853	Meru - 0721 201 013
Narok - 0712 201 561	Kericho - 0712 201 574	Nyeri - 0712 201 088
Nakuru - 0712 200 916	Nyahururu - 0712 201 583	Kisii - 0712201 007
Nanyuki - 0712 201 512	Chuka - 0712 200 969	Mombasa - 0712 200 954
Kakamega - 0712 199925	Kisumu - 0712 199 843	
Eldoret - 0712 200 805	Embu - 0712 201 565	Machakos - 0712 200 768
Utawala - 0791 399 053	Naivasha - 0712 200 934	
Thika - 0712 212 914	Kitengela - 0790 484 647	



Kenya Institute of Management



@kimkenya

admissions@kim.ac.ke

HIGHER EDUCATION AND  
CAREER GUIDE

## Foreign Partnerships

# College with a focus on business degrees and entrepreneurship

EduLink International College Nairobi has partnered with the University of Northampton, UK, to offer undergraduate business degrees

By MILLICENT MWOLOLO  
mmwololo@ke.nationmedia.com

It's been three years since EduLink International College Nairobi (EICN) was established, and already, the institution has gained much fame in the higher education sector.

The college's popularity arises from two key realities: Its learning environment and instruction approach, and provision of UK business degree courses right here in Kenya.

The latter is made possible by EICN's partnership with the University of Northampton, UK, whose undergraduate degrees on offer at EICN include BA (Hons) Business Studies, BA (Hons) Business and Accounting, BA (Hons) Business and Entrepreneurship and BA (Hons) Business and Marketing Management. These

business degree courses were introduced at the college in September 2016.

Mutuma Mwiraria, a budding entrepreneur, is already benefiting from the BA (Hons) Business and Entrepreneurship course he is doing at EICN. His company, Wireless Events, which he started in December 2015, is growing, and he believes that is owing to the lessons he is drawing from class and applying as he goes along.

"The course has given me new perspectives in running a business. Each day, I realise where I am going wrong and what to improve on. This has brought efficiencies in some of the processes," Mutuma explains.

He says, for instance, that initially, he would execute all the functions of the business – financial, marketing and technical – by himself. After what he has learnt from class so far, he has gone ahead and broken down the business into different departments under the care of different people.

"This has brought success in the business. We have been able to get big and repeat clients," says the 21 year-old with a smile.



We discuss business ideas that can work, and help to find solutions to the challenges that our businesses face

**Mutuma Mwiraria,**  
a student at  
EICN

With this, Mutuma is experiencing the value and potential benefit that lies in pursuing the BA (Hons) Business and Entrepreneurship at EICN.

The classes bring together business-minded people, providing a fertile ground to learn from the experiences of others, and to network. "We discuss business ideas that can work, and help to find solutions to the challenges that our businesses face. The learning is real and practical," says Mutuma.

His decision to join EICN arose from a desire to acquire a UK business degree. When he got to learn that he could get one locally, and from one of the most respected universities in the UK – the University of Northampton – he did not hesitate to join EICN.

With this, Mutuma has been able to continue with his business while still in school, unlike if he were to travel in the UK for studies. Besides, the cost for doing the course here translates to huge savings compared to studying for the same in the UK. "I am getting a good deal," he stresses.

"Studying for a UK business degree in Nairobi is even better," he continues. "I am learning about business opportunities and

markets in my country and how I can be part of the growth."

He says that, indeed, the learning experience has been eye-opening. "Some of the lecturers are successful business people. They tailor the content with real life examples."

The education at EICN recognises that there is more to business than just the qualifications. It thus builds the person beyond the school years. "My lecturer sees my potential beyond my grades. This makes the classroom a school of life as we go out and implement what we learn, then bring a report card before the class," Mutuma says.

Such learning environment provides space for students to be accountable and make their own decisions. "The lecturers do not hesitate at providing guidance and they fully support students to start their own businesses, while studying," Mutuma adds.

His excitement over the experience at EICN has seen him recommend the college to some of his friends. "EduLink is the perfect breeding ground for budding entrepreneurs. We network, and together build contacts and grow business. You get to reap more that you give," he says.

## Congratulations to KCSE candidates

Success  
starts here.

## Your route to a top university

Immerse yourself in the university experience from day one by joining a degree preparation programme at an International Study Centre.

International Foundation Year • International Year One • Pre-Masters

Choose from a wide range of universities in a variety of locations in the UK, Ireland and Holland

Coventry University  
Holland International Study Centre  
University of Huddersfield  
Institutomarangoni International Study Centre  
Keele University  
Kingston University London

Lancaster University  
Leeds Beckett University  
University of Leeds  
University of Leicester  
University of Lincoln  
Liverpool John Moores University

Royal Holloway University of London  
The University of Sheffield  
University of Strathclyde Glasgow  
University of Surrey  
University of Sussex  
University College Dublin

\* Delivered at Study Group London.

† Progression to a range of universities in Holland, including University Of Groningen, The Hague University of Applied Sciences, Hanze University of Applied Sciences, Vrije Universiteit Amsterdam, Tilburg University, University of Twente, Wittenborg University Amsterdam.

‡ Progression from Leeds International Study Centre



For more information, please contact

UNISERV NAIROBI, 9th Floor, Fortis Tower,  
Woodvale Grove, Westlands

C: +254 734 010 814 E: info@uniserveducation.com



www.uniserveducation.com  
Uniserv Education  
@UniservEd

## Why the buzz on technical training

CONTINUED FROM PAGE 12

vocational training over the years, the growth of this sub-sector has previously been rather haphazard and uncoordinated due to lack of a unified policy and legal weaknesses.

These resulted in ineffective co-ordination of training policies, disparities in training standards, and disproportionate production of personnel without relevant and adequate skills. The situation was aggravated by

inadequate funding of the sub-sector.

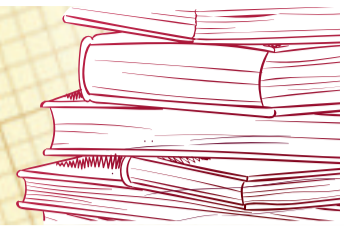
However, the government has refreshed reforms in this training sub-sector.

The reforms started with a rapid appraisal of the national TVET system, which was followed by a validation workshop of key stakeholders, who thereafter adopted the findings and recommendations of the rapid appraisal team.



# AFTER KCSE

## HIGHER EDUCATION AND CAREER GUIDE



## Education in Canada: An unforgettable learning experience to last a lifetime

Canada is well known for its friendly, welcoming and safe cities. It invests more in higher education every year than any other OECD member country. What's more, Canada's tuition and living costs are competitive when compared to other top-ranking destinations for study abroad.

Canada's education institutions consistently produce the high-quality talent that companies need. Its educational institutions excel in providing competency-based teaching and hands-on-learning that prepare students to be productive in the workplace immediately after graduation. The country is ranked 1st out of 16 for successful employment of university-educated alumni. Indeed, the qualifications of Canada-educated graduates open career doors worldwide.

Most Canadian higher learning institutions are publicly funded and are highly accountable in respect of quality assurance in teaching, research and

facilities. They thus meet exacting and rigorous quality control standards.

With their strong focus on incorporating cutting-edge technology and research, Canada's universities and colleges have modern facilities. These vibrant knowledge hubs connect government, institutions and companies together to stimulate innovation.

There are many types of academic institutions in Canada that can match a student's aspirations. Whether a programme is offered in a university, college, institute, or polytechnic, an education in Canada is an excellent experience that will prepare graduates for rewarding careers.

### Universities

Canadian universities offer more than 15,000 programmes at over 85 publicly funded universities across the country. They offer a range of degree options from three to four-year bachelor's degrees, to

master's, doctorates, and post-doctoral fellowships.

Many universities offer cooperative (co-op) education, distance learning and continuing education. Co-op education offers students the opportunity to combine in-class learning with paid work placements within industry or other organisations.

### Colleges, Institutes, and Polytechnics

Canada has an extensive network of mid-level post-secondary institutions that are recognised worldwide for their excellence. Their rigorous credentials are government-approved or may also be accredited by independent industry organisations. Their practical, career-oriented programmes are offered and designed in collaboration with employers. Some colleges also have transfer agreements with universities, and can be an alternate pathway to Canadian universities.

### How to Apply

**EduCanada.ca** - Students can research the educational institutions that best match their interests and career goals through the Government of Canada's official website.

Education is organised provincially and territorially, and there are differences in admission procedures across the country. Please visit these websites for more details:

**ouac.on.ca** - Ontario

**applybc.ca** - British Columbia

**alis.gov.ab.ca** - Alberta

For all other provinces or territories, apply directly to the institution being considered.

**Scholarships** in Canada are generally based on academic merit. Visit **scholarships.gc.ca** for more information.

### Work while Studying

Full-time international students are allowed to work for up to 20 hours per week during a regular academic session, and full-time during school breaks. Skilled work experience in Canada can help graduates qualify for permanent residence should they choose to stay longer. Visit **cic.gc.ca/english/study/work.asp** for more information.

### Why choose Canada?

Canada is consistently rated as one of the safest and best places in the world to live and has an education system that's among the world's best!

# EduCanada Fair

A World of Possibilities  
Un monde de possibilités

## Nairobi

3 & 4 February 2017 - 10am - 5pm  
InterContinental Hotel

Come meet representatives from **30 Canadian** academic institutions and learn more about opportunities to study in Canada!

For more information and to register, please visit  
**www.educanadafair.com/2017**

► **EduCanada.ca**



**EduCanada**<sup>®</sup>  
A world of possibilities  
Un monde de possibilités



**cmecc**

Council of  
Ministers  
of Education,  
Canada

Conseil des  
ministres  
de l'Éducation  
(Canada)

**Canada**



**THIKA TECHNICAL TRAINING INSTITUTE**  
**MINISTRY OF EDUCATION, SCIENCE AND TECHNOLOGY**  
 E-mail: [thikatech@yahoo.com](mailto:thikatech@yahoo.com) Website: [www.thikatechnical.ac.ke](http://www.thikatechnical.ac.ke)



**KENYA VISION 2030**  
 ISO 9001: 2008

**Vision:**

To be a centre of excellence in provision of business, scientific knowledge, skills and advanced skills and advanced technology for the benefit of society.

**Mission:**

To provide market driven training and development in business, science and technology for a dynamic clientele.



Principal Jefferson N. Kariuki.

As reflected in the school motto, 'Pride in Technology', Thika TTI is the center of excellence in Mechanical Engineering. The institution is committed to providing an innovative curriculum in response to increasing demand for mid-level professionals and technologists attendants to vision 2030.

COURSES OFFERED PER DEPARTMENT	INTAKE
<b>ELECTRICAL AND ELECTRONICS DEPARTMENT</b>	
Diploma and Craft in Electrical and Electronics Technology (Power Option) Modular	January/September
Diploma & Craft in Electrical & Electronics Technology (Telecommunication Option) Modular	January/September
Artisan Certificate in Electrical Installation	May
<b>HEALTH AND APPLIED SCIENCES DEPARTMENT</b>	
Diploma in Pharmaceutical Technology	January/September
Diploma in Applied Biology	January/September
Diploma in Analytical Chemistry	January/September
Craft Certificate in Science Laboratory Technology	May/September
Diploma and Certificate in Food science and Processing Technology	September
<b>MECHANICAL ENGINEERING DEPARTMENT</b>	
Diploma and Craft in Mechanical Engineering (Production Option) Modular	January/September
Diploma in Mechanical Engineering (Plant Option)	January/September
Diploma and Craft in Automotive Technology (Modular)	January/September
Artisan in Automotive Engineering	January
Diploma in General Agriculture (Modular)	January/September
Diploma in Entrepreneurial Agriculture	January/September
Craft in Agricultural Engineering	May
Artisan in Agricultural Mechanics	January
Artisan in General Agriculture	January
<b>INFORMATION COMMUNICATION TECHNOLOGY DEPARTMENT</b>	
Diploma and Certificate in Information Communication Technology ICT (Modular)	January/May/September
Diploma and Certificate in Information Studies	January/September/May
<b>LIBERAL STUDIES DEPARTMENT</b>	
Diploma and Certificate in Human Resource Management (Modular)	January/May
Diploma and Certificate in Community Development and Social Work (Modular)	January/May
<b>BUILDING AND CIVIL ENGINEERING DEPARTMENT</b>	
Diploma in Building Construction (Modular)	January/September
Diploma in Civil Engineering (Modular)	January/September
Diploma in Quantity Surveying	January
Diploma in Architecture	January/September
Craft in Masonry	May
Craft in Plumbing	May
<b>BUSINESS STUDIES DEPARTMENT</b>	
Diploma and Certificate in Business Management (Modular)	January/September
Diploma and Certificate in Supply Chain Management (Modular)	January/September
Diploma and Certificate in Sales and Marketing (Modular)	January/May
Diploma and Certificate in Project Management (Modular)	January/May/September
Craft in Secretarial Studies (single and group)	September

All applications to include copies of the result slip or examination certificate, school leaving certificate, ID and Ksh. 500/= money order processing fee (non-refundable) payable to Thika Technical Training Institute.



Our Engineering students in the smart lab learning through simulation



Our mechanical engineering training programs.

## HIGHER EDUCATION AND CAREER GUIDE

### Renewed Pursuit for Global Competitiveness

# Solving challenges to university quality assurance in East Africa

By **MILLICENT MWOLOLO**

[mmwololo@ke.nationmedia.com](mailto:mmwololo@ke.nationmedia.com)

In spite of the positive developments in quality assurance in the last 10 years, there are still notable challenges that impeded the provision of quality higher education in East Africa.

The most notable of these challenges include insufficient human capacity and inadequate funding.

Consequently, quality assurance in higher education has become an issue of great concern among all stakeholders, including governments, policy makers, parents, employers, and students.

The quality of graduates from universities continues to be a source of worry to employers, who keep calling for better quality standards.

The quality of research is also compromised. Hence, there are a number of things that need to be done right or better than current practice, for the region to stay competitive in an increasingly globalised world.

Is it a matter of being more creative or innovative in how the higher education system is quality assured? Is it the case of pooling regional resources and sharing best practices that will improve quality?

The African Summit on Higher Education held in March 2015 in Dakar, Senegal, identified key issues that quality assurance in higher education in African countries needed to achieve. Among these is the radical expansion of higher education to achieve a participation rate of 50 per cent within 50 years, and improvement of graduate employability.

Further, universities in Africa need support for research and continued training of academic staff.

These challenges call for further strengthening of quality assurance of teaching, learning and research. They call for the establishment of robust mechanisms for quality assurance of research universities and centres of excellence. Systems need to be built and strengthened for both minimum quality standards and standards of excellence.

With 2015 having been the deadline year of the attainment of the then Millennium Development Goals and the end-point year for the African Union Second Decade on Education (2006-2015), member states need to ask themselves hard questions and seek solutions from within.

For instance, they need to gauge how they can match increasing access with better quality of products, and how to ensure that private and cross-border providers do not compromise quality.

There is the need to think about how to better make use of emerging technologies to bolster quality of the traditional and

non-traditional modes of higher education delivery. Even more is how to make their higher education systems and their management more efficient, and how to fully harness the power of quality higher education to pull the teeming masses in East Africa out of poverty

Collective effort brandishes huge leveraging power, thus the need to strategise on how member states can mobilise continental initiatives at quality assurance (including accreditation). This would inspire quality across higher education systems in the region, leaving no nation behind.

#### Renewed hope

There is greater hope in the Inter University Council of East Africa in developing a yardstick of standards and mechanisms for regulating the quality of cross-border education and e-learning.

It is common knowledge that quality in higher education is key to achieving a competitive edge and corporate excellence in the region. This will promote the reputation of East Africa, as it will make its graduates very marketable internationally, thus enhancing employment opportunities of quality graduates.

With harmonisation in higher education standards, there is bound to be coherence and benchmarks for comparability within the region. This will enable higher education systems in East Africa to recognise each other regarding their academic programmes. This would open up recognition of East Africa as a specific higher education area whose quality standards have an international outlook.

There is further hope that with numerous networking opportunities arising for scholars and practitioners in quality assurance in the region, collaboration and networking among stakeholders involved in quality assurance work in East Africa will be strengthened.

This will inform on policy issues concerning quality assurance in the region's higher education systems and their impacts on quality assurance.

Such knowledge sharing platforms will be grounds for future learning on best practices within and outside borders of East Africa.

There is hope that with numerous networking opportunities arising for scholars and practitioners in quality assurance in East Africa, collaboration and networking among stakeholders involved in quality assurance work in the region will be strengthened.



Ministry of Education  
State Department of Vocational and Technical Training  
**KAIBOI TECHNICAL TRAINING INSTITUTE**  
P.O BOX 937, ELDORET, Kenya. Tel: 0727 937937 / 0734 937937 / 0733 659780 FAX : 0202029886  
Website: www.kaiboitech.ac.ke E-Mail: kaiboi@kaiboitech.ac.ke  
*Technology for Self-Empowerment*



**JANUARY, MAY AND SEPTEMBER 2017 INTAKES**

Mechanical Engineering Department					
COURSE	LEVEL	DURATION	EXAMINING BODY	MINIMUM ENTRY REQUIREMENT	ADM PERIOD
MECHANICAL ENGINEERING (PLANT)	Diploma (TEP)	2½ YRS	KNEC	KCSE C (MINUS)	SEP/JAN
MECHANICAL ENGINEERING (PRODUCTION)	Diploma (Modular)	2½ YRS	KNEC	KCSE C(MINUS)	SEPT/JAN
MECHANICAL ENGINEERING (PROD)	Craft (Modular)	2 YRS	KNEC	KCSE D (PLAIN)	MAY/JAN
CERTIFICATE IN WELDING AND FABRICATION	Craft (Modular)	2 YRS	KNEC	KCSE D (PLAIN)	MAY/SEP
WELDING AND FABRICATION	Artisan (TEP)	1 YR	KNEC	KCSE D(MINUS) KCPE	JAN
Electrical and Building Engineering Department					
ELECTRICAL & ELECTRONICS ENGINEERING (POWER)	Diploma (Modular)	2½ YRS	KNEC	KCSE C (MINUS)	SEP/JAN
ELECTRICAL & ELECTRONIC ENGINEERING (CONTROLS AND INSTRUMENTATION)	Diploma (Modular)	2½ YRS	KNEC	KCSE C (MINUS)	JAN
BUILDING & CONSTRUCTION TECHNOLOGY	Diploma (Modular)	2½ YRS	KNEC	KCSE C (MINUS)	SEPT/JAN
CERTIFICATE IN ELECTRICAL AND ELECTRONICS TECHNOLOGY	Craft (Modular)	2 YRS	KNEC	KCSE D (PLAIN)	MAY/SEPT
ELECTRICAL INSTALLATION	Artisan (TEP)	1 YR	KNEC	KCSE D (MINUS), KCPE	JAN
ELECTRICAL WIREMAN	Trade test	1 YR	NITA	KCSE D (MINUS), KCPE	JAN
SOLAR PV	Trade test	6 months	NITA	KCSE D+ (PLUS)	JAN/MAY
CERT IN ROAD CONSTRUCTION TECHNOLOGY	Craft (Modular)	2 YRS	KNEC	KCSE D (PLAIN)	MAY/SEPT
DIPLOMA IN TELECOMMUNICATION	Diploma (Modular)	2½ YRS	KNEC	KCSE C (MINUS)	SEP/JAN
PLUMBING & BUILDING SERVICES	Artisan (TEP)	1 YR	KNEC	KCSE D (MINUS), KCPE	JAN
CERT IN BUILDING AND CONSTRUCTION TECHNOLOGY	Craft (Modular)	2 YRS	KNEC	KCSE D (PLAIN)	MAY/SEPT
PLUMBING AND BUILDING SERVICES	Craft (TEP)	2 YRS	KNEC	KCSE D (PLAIN)	MAY/SEPT
CARPENTRY AND JOINERY CRAFT	Craft (TEP)	2YRS	KNEC	KCSE D (PLAIN)	MAY/SEPT
Automotive Engineering Department					
AUTOMOTIVE ENGINEERING	Diploma (Modular)	2½ YRS	KNEC	KCSE C (MINUS)	SEPT/JAN
CERT IN AUTOMOTIVE ENGINEERING	CRAFT (Modular)	2 YRS	KNEC	KCSE D (PLAIN)	MAY
MOTOR VEHICLE MECHANICS	Artisan (TEP)	1 YR	KNEC	KCSE D (MINUS), KCPE	JAN
Agricultural Engineering Department					
AGRICULTURAL ENGINEERING	Diploma (Modular)	2½ YRS	KNEC	KCSE C (MINUS)	SEPT/JAN
GENERAL AGRICULTURE	Diploma (Modular)	2½ YRS	KNEC	KCSE C (MINUS)	SEPT/JAN
CERTIFICATE IN GENERAL AGRICULTURE	Craft (Modular)	2 YRS	KNEC	KCSE D (PLAIN)	MAY/SEPT
CERT IN AGRICULTURAL ENGINEERING	Craft (TEP)	2 YRS	KNEC	KCSE D (PLAIN)	MAY/SEPT
AGRICULTURAL ENGINEERING	Artisan (TEP)	1 YR	KNEC	KCSE D-(MINUS), KCPE	JAN
GENERAL AGRICULTURE	Artisan (TEP)	1 YR	KNEC	KCSE D- (MINUS), KCPE	JAN
SUSTAINABLE AGRICULTURE	Diploma (Modular)	2½ YRS	KNEC	KCSE C- (MINUS)	JAN
Information Communication Technology (ICT) Department					
INFORMATION COMMUNICATION TECHNOLOGY	Diploma (Modular)	2½ YRS	KNEC	KCSE C- (MINUS)	SEPT/JAN
INFORMATION STUDIES	Diploma (Modular)	2½ YRS	KNEC	KCSE C- (MINUS)	JAN
INFORMATION COMMUNICATION TECHNOLOGY	Craft (Modular)	2 YRS	KNEC	KCSE D PLAIN	MAY/SEPT
CERTIFICATE IN INFORMATION COMMUNICATION TECHNOLOGY	Technician (Level 1& 2)	6 months each	KASNEB	KCSE D (PLAIN)	MAY/SEPT
COMPUTER STUDIES	Diploma (Modular)	2½ YRS	KNEC	KCSE C- (MINUS)	JAN/MAY
Business Studies					
SOCIAL WORK AND COMMUNITY STUDIES	Diploma (Modular)	2½ YRS	KNEC	KCSE C- (MINUS)	SEPT/JAN
ACCOUNTANCY	Diploma (TEP)	2½ YRS	KNEC	KCSE C- (MINUS)	SEPT/JAN
HUMAN RESOURCE MANAGEMENT	Diploma (Modular)	2½ YRS	KNEC	KCSE C-(MINUS)	SEPT/JAN
BUSINESS MANAGEMENT	Diploma (Modular)	2½ YRS	KNEC	KCSE C- (MINUS)	SEPT/JAN
SUPPLY CHAIN MANAGEMENT	Diploma (Modular)	2½ YRS	KNEC	KCSE C-(MINUS)	SEPT/JAN
COOPERATIVE MANAGEMENT	Diploma (Modular)	2½ YRS	KNEC	KCSE C- (MINUS)	SEPT/JAN
LIBRARY AND INFORMATION SCIENCE	Diploma (Modular)	2½ YRS	KNEC	KCSE C- (MINUS)	SEPT/JAN
SECRETARIAL STUDIES	Diploma (Modular)	2½ YRS	KNEC	KCSE C- (MINUS)	SEPT/JAN
CERT IN HUMAN RESOURCE MANAGEMENT	Craft (Modular)	2 YRS	KNEC	KCSE D (PLAIN)	MAY/JAN
CERTIFICATE IN BUSINESS MANAGEMENT	Craft (Modular)	2 YRS	KNEC	KCSE D (PLAIN)	MAY/JAN
CERT IN SUPPLY CHAIN MANAGEMENT	Craft (Modular)	2 YRS	KNEC	KCSE D PLAIN	MAY/JAN
CERT IN COOPERATIVE MANAGEMENT	Craft (Modular)	2 YRS	KNEC	KCSE D (PLAIN)	MAY/JAN
CERT IN LIBRARY & INFORMATION SCIENCE	Craft (Modular)	2 YRS	KNEC	KCSE D (PLAIN)	MAY/JAN
CERT IN SOCIAL WORK & COMMUNITY DEVELOPMENT	Craft (Modular)	2 YRS	KNEC	KCSE D (PLAIN)	MAY/JAN
SECRETARIAL STUDIES (SINGLE & GROUP)	STAGE I,II,III	6 months	KNEC	KCSE D-(MINUS), KCPE	MAY/SEPT
ACCOUNTING TECHNICIAN DIPLOMA	Diploma (Level I,II,III)	6 months each level	KASNEB	KCSE C-(MINUS)	MAY/SEPT
Part-Time Holiday Courses In April, August and December					
ACCOUNTANCY	Diploma (Modular)	3 SESSIONS	KNEC	KCSE C- (MINUS)	AUG/DEC
GENERAL AGRICULTURE	Diploma (Modular)	3 SESSIONS	KNEC	KCSE C-(MINUS)	AUG/DEC
HUMAN RESOURCE MANAGEMENT	Diploma (modular)	3 SESSIONS	KNEC	KCSE C- (MINUS)	AUG/DEC
BUSINESS MANAGEMENT	Diploma (Modular)	3 SESSIONS	KNEC	KCSE C- (MINUS)	AUG/DEC
SECRETARIAL STUDIES	Single & Group, Diploma (Modular)	Varied	KNEC	KCPE, KCSE C-(MINUS)	AUG/DEC
COMPUTER SYSTEMS APPLICATION PACKAGES	Proficiency	1 month	KTTI	KCPE & Above	APRIL/AUG/DEC
SOLAR PV TRAINING	T1, T2	3 Weeks	NITA	Basic Training in Electricals	APRIL/AUG/DEC
ATD, CPA	DIPLOMA, PROFESSIONAL	2 SESSIONS	KASNEB	As per KASNEB REQUIREMENTS	APRIL/AUG

Apply to:  
The Principal  
Kaiboi Technical Training Institute,  
P.O. Box 937-30100 ELDORET  
You can download Application Form,  
Fill and send it to us  
Attach copies of certificates

**OUR FEES:**  
DAYSCHOLARS KSH. 11,350/= BOARDERS KSH. 18,750/=



**KENYA SCHOOL OF LAW**

**DIPLOMA IN LAW (PARA-LEGAL) STUDIES  
COMMENCING IN MAY 2017**

**(DAY/EVENING CLASSES)**

The Kenya School of Law is an institution established under the Kenya School of Law Act, 2012. The School is mandated by Part II, 4(1) of the Act to be a public legal education provider responsible for the provision of professional legal training as an agent of the Government. In the exercise of this mandate the School invites applications from qualified candidates to pursue studies leading to a Diploma in Law (Para-legal) studies, commencing in May 2017

**General objectives of the Programme:**

The general objectives shall be to train persons to serve in all fields of law and to instill professional preparedness and ethical commitment in the legal practice to persons serving at the Para-legal level. The programme also lays a solid foundation for those wishing to pursue further studies in the legal field.

**Venue:**

The programme is offered at the ultra-modern and serene Kenya School of Law, **Town Campus**, Development House, 5<sup>th</sup> Floor, New Wing, Moi Avenue, Nairobi.

**Minimum entry requirements:**

To be eligible for admission into the Diploma in Law (Para-legal Studies) Programme at the Kenya School of Law one must possess:

1. A mean grade of **C (PLAIN)** in the Kenya Certificate of Secondary Education (**KCSE**) or its equivalent, and a minimum grade **C+ (PLUS) in English**; or
2. A minimum of **Division III in KCE/EACE** or its equivalent, with at least a **credit in English Language**;
3. At least **one principal** pass at the Kenya Advanced Certificate of Education (**KACE**), or its equivalent; or
4. A distinction or credit pass in the Certificate in Law course conducted at the Kenya School of Law between the years 2000 and 2003 or any other Certificate or Diploma in a relevant field from an institution recognized by the Council of Legal Education.

**Duration and Pattern of the programme:**

1. This is a weekday programme with an option for either day or evening classes.
2. The programme shall last for a minimum period of two (2) academic years comprising of Three (3) terms in each year.
3. Students shall register for a maximum of four (4) course units per term.
4. To qualify for the award of the Diploma in Law (Para-legal Studies) candidates must complete the course of study in not less than two (2) academic years and not more than three (3) academic years.

**Fees structure:**

Item	Cost(Kshs.)
1. Application fees (to be paid on submission of application) .....	2000/=
2. Tuition fees <b>per course unit</b> *...(Maximum 4 units per term)	7500/=
3. Examination fees <b>per course unit</b> *...(Maximum 4 units per term)	3000/=
4. Library fees ( <b>one- off</b> ).....	5000/=

\*Total units for programme = 24

**Mode of Application:**

Application to the 2017/2018 academic year commencing on 2<sup>nd</sup> May 2017 must be in the prescribed form. Application forms may be obtained from the Kenya School Law, Academic Services Department during working hours, or downloaded from the School website ([www.ksl.ac.ke](http://www.ksl.ac.ke)). The application form must be returned together with:

- a) Copy of KCSE/KCE certificate;
- b) Copies of relevant professional certificates and transcripts;
- c) Copy of national identity card;
- d) Two passport size colour photographs.
- e) Copy of payment receipt for application issued by Finance office, Kenya School of Law.

All applications should be addressed to

**Director/CEO**  
**Kenya School of Law, Lang'ata South Road,**  
**P.O. Box 30369-00100**  
**NAIROBI**

Applications can also be dropped at the Kenya School of Law, Town Campus, Development House, 5<sup>th</sup> Floor, New Wing, Moi Avenue, Nairobi. So as to be received, not later than **7<sup>th</sup> April, 2017**.

Applications not accompanied by the required documents, or sent after the closing date shall not be accepted.

Prof. PLO Lumumba, CPS (K), LL.D., MKIM

**DIRECTOR/CHIEF EXECUTIVE &  
SECRETARY, KENYA SCHOOL OF LAW BOARD**



The Kenya School of Law is an ISO 9001:2008 Certified Organization

CHUKA



UNIVERSITY



## OFFICE OF THE DEPUTY VICE-CHANCELLOR (ACADEMIC, RESEARCH &amp; STUDENT AFFAIRS)

## APPLICATION FOR ENROLMENT IN SELF-SPONSORED PROGRAMMES. ADMISSION TIMELINES ARE: JANUARY, APRIL, MAY, AUGUST, SEPTEMBER &amp; DECEMBER

**Vision:** To be a Premier University for the provision of quality education, training and research for sustainable national and global development.

Chuka University is ISO 9001:2008 Certified



**Mission:** To generate, preserve and share knowledge for effective leadership in higher education, training, research and outreach through nurturing an intellectual culture that integrates theory with practice and innovation.

**Motto:** Sapientia divitia est (Knowledge is Wealth) Akili ni Mali

**Brief History:** Chuka University (CU) started as Egerton University Eastern Campus College in 2004. It was the first public institution of university status to be established in Eastern Kenya. The Campus College was elevated to Chuka University College on 23<sup>rd</sup> August, 2007. On 10<sup>th</sup> December, 2007, H.E. Mwai Kibaki visited and inaugurated the University College. The University College later expanded and established the Embu, Igembe and Chogoria Campus Colleges. On 8<sup>th</sup> January, 2013, H.E. Mwai Kibaki granted a Charter to the University College, making it the 9<sup>th</sup> full-fledged University in Kenya. Chuka University is located in Chuka Municipality in Meru South Subcounty, Tharaka-Nithi County. It is situated approximately 186 km from Nairobi City along the all-weather Nairobi-Meru highway. Chuka University provides high quality and affordable university education in the programmes shown below. Presently, the student population has surpassed 14,000. The University has opened four Campuses, namely: Main in Chuka, Embu, Igembe in Maua & Chogoria. Students who join Chuka University will find committed scholars whose quest for academic excellence is exemplary. The high calibre graduates of Chuka University easily secure employment in reputable organisations and careers. Chuka University is an equal opportunity provider.

## CHUKA UNIVERSITY ACADEMIC PROGRAMMES

Applications are invited from suitably qualified self-sponsored students to enroll in Chuka University. Admission timelines are: September, January and May of each year for full-time students; December, April and August of each year for part-time/school-based/work-based students. Study timings are day, evening or week-end.

BACHELOR'S DEGREE PROGRAMMES	MINIMUM ENTRY REQUIREMENTS	DURATION & STUDY MODE	*TUITION FEES ONLY	CAMPUS
Bachelor of Science in Nursing (Regular)	Mean grade C+ at KCSE and at least a C+ (plus) in each of the following subjects: English or Kiswahili, Biology or Biological Sciences, Math or Physics, Chemistry or Physical Sciences, OR -KACE: 2 principal passes in science subjects & a subsidiary pass in: (Biology = Principal, Chemistry = Principal, Physics/Math = Subsidiary).	12tri-mesters (3 per year) Full-time (FT) (Sept. intake only)	70,000/= / semester	MAIN
Bachelor of Science in Nursing (Upgrading)	Have attained Division II in KCE or an aggregate C (plain) in KCSE, with C in: Biology/ Biological Sciences; English or Kiswahili; Mathematics or Chemistry/ Physics or Physical Sciences, a Diploma in Community Health Nursing from a recognized medical training institution, registration by the NCK, and 2-years working experience.	8tri-mesters (3 per year), Work-based (WB) (May intake only)	58,000/= / semester	MAIN
B.Sc. (Computer Science)	-Mean grade C+ at KCSE plus C+ in Math, C in Physics/Physical Sciences, C grade in one humanities & one language subject. OR -Two principals one must be in Math or Physics at "A" level. OR -Diploma with at least a credit in Computer Science or equivalent from a Senate-recognised institution with a pass in physics at KCSE.	8 semesters Full-time or Work-based Day, Evening or Weekend	55,000/= / semester 40,000/= / block	MAIN
B.Sc. (Applied Computer Science)	-Mean grade C+ at KCSE plus EITHER C in Math and Physical Sciences or B- in any science subject and has a pass in physics at KCSE, and C in 1 humanities and 1 language subject. OR -Two principals one must be in Math or Physical Sciences at "A" level. OR -Diploma with at least credit in Computer Science, Applied Computer Science or equivalent from a Senate-recognised institution & a pass in physics at KCSE.	8 semesters Full-time or Work-based Day, Evening or Weekend	55,000/= / semester 40,000/= / block	MAIN
B.Sc. in: Mathematics, Botany/Zoology, Physics, or Chemistry	Mean grade C+ at KCSE, with a C+ in any 2 Science subjects relevant to the area of study, OR Two principals and one subsidiary at A-level in Science subjects, OR a Diploma in Sciences/Applied Sciences or its equivalent with a minimum of a credit pass from a Senate-recognised institution	8 semesters Full-time (FT)	55,000/= / semester	MAIN
B.Sc. (Biochemistry)	Mean grade C+ at KCSE, with C+ Mat, B Chem/ B+ Phy Sci, B Phy/B+ Phy Sci, B Bio/B+ Biological Science	8 semesters FT	55,000/= / semester	MAIN
Bachelor of Commerce (Accounting, Banking & Finance, Human Resource Mgt, Marketing, Mgt Science, Insurance & Risk Mgt, OR Cooperatives Management)	Mean grade C+ at KCSE, with a C plain in Math and English or Kiswahili, OR 2 Principal passes and 1 subsidiary at A-level plus at least a credit in Math and English or Kiswahili at O-Level, OR a Diploma in Business related areas, with a minimum of a credit pass from a Senate-recognised institution, OR CPA/CPS II, OR HND in Business related disciplines from a recognised institution. CPA/CPS III, Diploma and HND attract credit transfer	8 semesters Full-time or Work-based Day, Evening or Weekend	50,000/= / semester 34,000/= / block	ALL = MAIN, EMBU, IGEMBE, CHOGORIA,
B.Sc. (Economics & Statistics)	Mean grade C+ at KCSE, with C+ in Math or C in Math and C in Economics, C in English or Kiswahili, OR a Diploma with a minimum of a credit pass in Business related areas from a Senate-recognised institution	8 semesters Full-time	50,000/= / semester	MAIN
-Bachelor of Agribusiness Management -B.Sc. (Agricultural Economics)	Mean grade C+ at KCSE, with C+ in Math, Biology or Biological Sciences, Chemistry or Physics or Physical Sciences, OR a Diploma in Business related areas with a minimum of a credit pass from a Senate-recognised institution. Advantage is C in economics, commerce, or accounting/Agriculture	8 semesters Full-time (FT)	50,000/= / semester	MAIN
-Bachelor of Entrepreneurship and Small Business Management -Bachelor of Purchasing & Supplies Mgt	Mean grade C+ at KCSE, with C in Math, Biology, Chemistry or Physics, OR a Diploma in Business related areas with a minimum of a credit pass from a Senate-recognised institution			ALL
B.Ed. (Primary)	Mean grade C at KCSE and PI Certificate and C+ in any two cluster subjects	4 years (SB)	40,000/= / block	ALL
B.Ed. (Arts)	Mean grade C+ at KCSE, with at least C+ in teaching subjects, OR 2 principals and 1 subsidiary pass at KACE, OR a Diploma in Education with a minimum of a credit pass from a Senate-recognised institution	8 semesters FT 4 years SB	50,000/= / semester 34,000/= / block	ALL
B.Ed. (Science)	Mean grade C+ at KCSE, with at least a C in Math & C+ in teaching subjects, OR 2 principals and 1 subsidiary pass at KACE, OR a Diploma in Education with a minimum of a credit pass from a Senate-recognised institution	8 semesters FT 4 years SB	55,000/= / semester 40,000/= / block	MAIN, IGEMBE, CHOGORIA
B.Sc. (Agricultural Education & Extension)	Mean grade C+ at KCSE, with a pass in Agriculture and a C in: Biology, Chemistry, English or Kiswahili, Math or Geo or Physics, OR a Diploma in Agricultural Sciences with at least a Credit pass from recognized institutions	8 semesters FT 4 years WB/SB	55,000/= / semester 40,000/= / block	MAIN
Bachelor of Psychology.	Mean grade C+ at KCSE, with a C in any of the following subjects: English or Kiswahili, OR a Diploma in Guidance and Counseling with a minimum of a credit pass from a Senate-recognised institution	8 semesters Full-time	50,000/= / semester	MAIN
B.Ed. (Early Childhood Development)	Mean grade C+ at KCSE, OR Two principals and one subsidiary pass at KACE, OR a Diploma in Education with a minimum of a credit pass from a Senate-recognised institution	8 semesters FT 4 years SB	50,000/= / semester 34,000/= / block	ALL
B.Sc. (Ecotourism & Hospitality Mgt) Bachelor of Tourism & Hotel Mgt Bachelor of Catering and Hotel Mgt	Mean grade C+ at KCSE C in Math, English or Kiswahili, OR Two principals at A-level plus a pass in Math and English at O-level, OR a Diploma in Tourism, Tour Guiding or Hotel Management with a minimum of a credit pass from a Senate-recognised institution may be admitted to second year of study	8 semesters Full-time or Work-based Day, Evening or Weekend	55,000/= / semester 40,000/= / block	MAIN MAIN MAIN
B.Sc. (Wildlife Enterprise & Mgt)	Mean grade C+ at KCSE, with a C in the following subjects: Math, Chem, Geog or Physics, Biology or Biological Sciences, OR Two principals and a subsidiary pass at A-level in Chem, Bio, Geo, Physics or Math, OR Diploma holder in wildlife related fields with a minimum of a credit pass from a Senate-recognised institution	8 semesters Full-time	55,000/= / semester	MAIN
B.Sc. (Animal Science)	Mean grade C+ at KCSE, with a C in: Math, Chemistry, Biology, Geography or Physics, English or Kiswahili, OR 2 principals and a subsidiary pass in relevant subjects, OR Diploma in Animal Production or related field with a minimum of a credit pass from a Senate-recognised institution	8 semesters Full-time	55,000/= / semester	MAIN
B.Sc. (Agriculture)	Mean grade C+ at KCSE, with a C in: Biology, Chemistry, English or Kiswahili, Math or Geography or Physics, OR a Diploma in Agriculture/Horticulture with a minimum of Credit pass from a Senate-recognized institution	8 semesters Full-time	55,000/= / semester	MAIN
B.Sc. (Environmental Science)	Mean grade C+ at KCSE, with a C in: Math, Chemistry, Physics or Geography, Biology, Two principals and a subsidiary pass at A-level in Chemistry, Biology, Geography, Physics or Math	8 semesters Full-time	55,000/= / semester	MAIN
B.Sc. (Natural Resources Management)	Mean grade C+ at KCSE, with a C in: Math, Chemistry, Physics or Geography, Biology, Two principals and a subsidiary pass at A-level in Chemistry, Biology, Geography, Physics or Math	8 semesters Full-time	55,000/= / semester	MAIN
B.Sc. (Horticulture).	Mean grade C+ at KCSE, with a C in: Biology, Chemistry, English or Kiswahili, Math or Geography or Physics, OR a Diploma in Agriculture/Horticulture with a minimum of Credit pass from a Senate-recognized institution	8 semesters Full-time	55,000/= / semester	MAIN
B.A. (Communication and Media)	Mean grade C+ at KCSE, with a C+ in Engl or Kisw, OR 2 principals at A-level with credit in Eng/Kisw at O-level, OR a Diploma in Journalism & related areas with a minimum of a credit pass from a Senate-recognised institution	8 semesters Full-time or Work-based Day, Evening or Weekend	50,000/= / semester 34,000/= / block	MAIN

B.A. (Economics and Sociology)	Mean grade C+ at KCSE, with C+ in the following subjects: Economics, Math or a bridging course, OR 2 principal passes at A-level with credit in Math, English or Kiswahili at O-level, OR a Diploma in related areas with a minimum of a credit pass from a Senate-recognised institution	8 semesters Full-time	50,000/= / semester 34,000/= / block	MAIN
B.A. (Criminology and Security Studies).	Mean grade C+ at KCSE, with a C in English or Kiswahili and Chemistry or Biology or Math or Physics, OR 2 principals and 1 subsidiary in relevant subjects, OR a Diploma in related areas with a minimum of a credit pass from a Senate-recognized institution	8 semesters Full-time or Work-based Day, Evening or Weekend	50,000/= / semester 34,000/= / block	ALL
B.Sc. (Community Development).	Mean grade C+ at KCSE with a C in the following subjects: Biology, Chemistry, or C in any other subject, OR a Diploma Credit (or Pass with at least 2 years work experience) in Agriculture, Home Economics, Agricultural Education & Extension, Cooperative Mgt, Community Development or any related field from a Senate-recognized institution	8 semesters Full-time or Work-based Day, Evening or Weekend	55,000/= / semester 40,000/= / block	ALL
B.A. (Sociology)	Mean grade C+ at KCSE, with a C in English or Kiswahili and C+ in any two (Geography, History, Religious Studies, English or Kiswahili), OR 2 principals at A-level plus Credit in Math, English or Kiswahili at O-level, OR a Diploma in related areas with a minimum of a credit pass from a Senate-recognized institution	8 semesters Full-time	50,000/= / semester	MAIN, EMBU
Bachelor of Arts (Geography, Kiswahili, English, Economics, Sociology, History, Religious Studies, Literature, Languages & Linguistics)	Mean grade C+ at KCSE, with a C in English or Kiswahili and C+ in any two (Geography, Math, History, Religious Studies, English or Kiswahili), OR 2 principals at A-level plus Credit in Math, English or Kiswahili at O-level, OR a Diploma in related areas with a minimum of a credit pass from a Senate-recognized institution	8 semesters Full-time	50,000/= / semester	MAIN
BSc (Biomedical Science and Technology)	Mean grade C+ at KCSE and at least a C+ (plus) in each of the following subjects: Eng or Kis, Bio or Bio Sci, Math, Che OR -KACE: 2 principal passes in science subjects & a subsidiary pass as follows: (Biol = P, Che = P, Phy/Math = S).	8 semesters Full-time (FT)	55,000/= / semester	MAIN
Bachelor of Cooperatives Management	Mean grade C+ at KCSE, with a C plain in Math and Engor Kis, OR 2 Principal passes and 1 S at A-level plus at least a credit in Math and Eng or Kis at O-Level, OR a Diploma in Business related areas, OR CPA/ CPS II, OR HND in Business related disciplines from institution recognized by Senate. CPA/CPS III, Diploma and HND attract credit transfer	8 semesters Full-time or Work-based Day, Evening or Weekend	50,000/= / semester	MAIN
BSc (Food Science and Technology)	Mean grade C+ at KCSE, with a C in: Bio, Che or Phy, Eng or Kis, Math OR a Diploma in Food & Technology or equivalent with a minimum of Credit pass	8 semesters Full-time (FT)	55,000/= / semester	MAIN
Bachelor of Library and Information Studies	Mean grade C+ at KCSE with a C in Eng or Kis or Diploma with credit in Library & information Studies from a from institution recognized by Senate	8 semesters Full-time or Work-based Day, Evening or Weekend	50,000/= / semester	MAIN, EMBU

**DIPLOMA PROGRAMMES**

Diploma in: Business Mgt, Accounting, Human Resource Mgt, Procurement & Logistics Mgt	Mean grade C at KCSE, with a C- in Math and English or Kiswahili	4 semesters FT or WB Day, Evening or Weekend	35,000/= / semester 24,000/= / block	ALL
Diploma in Computer Science	Mean grade C at KCSE with a C in Math, Physics and English or Kiswahili, OR a certificate in a related field from a Senate-recognized institution and has taken and passed Physics at any level.	4 semesters FT Full-time or Work-based Day, Evening or Weekend	40,000/= / semester 30,000/= / block	MAIN, EMBU
Diploma in Animal Health	Mean grade C at KCSE, with C- in Math, Biology or Chemistry and English or Kiswahili OR a certificate in Animal Health and Production or related fields from a Senate-recognized institution	6 semesters FT Full-time or Work-based Day, Evening or Weekend	35,000/= / semester 24,000/= / block	MAIN
Diploma in Farm Resources Management	Mean grade C at KCSE, with a C- in Math, Biology or Chemistry and English or Kiswahili, OR a certificate in related field from a Senate-recognized institution	6 semesters FT Full-time or Work-based Day, Evening or Weekend	35,000/= / semester 24,000/= / block	M
Diploma in Horticulture Diploma in Agriculture	Mean grade C at KCSE, with a C- in Math, Biology or Chemistry and English or Kiswahili OR a certificate in horticulture/ agriculture or related fields from a Senate-recognized institution	6 semesters FT Full-time or Work-based Day, Evening or Weekend	35,000/= / semester 24,000/= / block	MAIN
Diploma in Tourism & Hotel Management	Mean grade C at KCSE, with a C- in Math and English or Kiswahili, OR relevant certificate	6 semesters FT Full-time or Work-based Day, Evening or Weekend	35,000/= / semester 24,000/= / block	MAIN, IGEMBE, CHOGORIA
Diploma in Ecotourism & Hospitality Mgt	Mean grade C at KCSE, with a C- in Math and English or Kiswahili, OR relevant certificate	6 semesters FT Full-time or Work-based Day, Evening or Weekend	35,000/= / semester 24,000/= / block	MAIN, IGEMBE, CHOGORIA
Diploma in Wildlife Management	Mean grade C at KCSE, with a C- in Math and English or Kiswahili, OR relevant certificate	6 semesters FT Full-time or Work-based Day, Evening or Weekend	35,000/= / semester 24,000/= / block	MAIN, IGEMBE, CHOGORIA
Diploma in Education (Primary)	Mean grade C at KCSE, or C- with P I certificate and teaching experience of at least 2 years	2 years SB	24,000/= / block	ALL
Diploma in Education (Secondary)	Average C+ at KCSE, with a C+ in at least two teaching subjects	3 years Full-time or Work-based Day, Evening or Weekend	36,000/= / semester 24,000/= / block	ALL
Diploma in Agricultural Educ. & Extension	Mean grade C+ at KCSE with C grade in Biology, Agriculture, Chemistry or Physics, and Math or Geography, OR a certificate in agriculture or related field from a Senate-recognized institution	3 years Full-time or Work-based Day, Evening or Weekend	36,000/= / semester 24,000/= / block	MAIN
Diploma in: Community Development, Criminology & Security Studies, Disaster Mgt, Project Planning & Mgt, Social Work, Leadership & Public Admin, Journalism & Mass Communication	Mean grade C in KCSE, or its equivalent, OR a Certificate in related course from institutions recognized by the Chuka University Senate.	4 semesters Full-time or Work-based Day, Evening or Weekend	35,000/= / semester	ALL

**CERTIFICATE COURSES**

-Certificate in Business Management -Certificate in Procurement & Logistics Management	Mean grade D+ and above at KCSE	4 months Full-time or Work-based Day, Evening or Weekend	28,000/= / course	ALL
---	---------------------------------	--	-------------------	-----

Certificate in Computer Science	Mean grade D+ and above at KCSE	2 semesters FT or WB Day, Evening or Weekend	30,000/= / semester	MAIN
Certificate in Hospitality & Tourism Management	Mean grade D+ and above at KCSE	3 semesters Full-time or Work-based Day, Evening or Weekend T	30,000/= / semester	MAIN, IGEMBE, CHOGORIA
Certificate in Animal Health	Mean grade C- at KCSE, with a C- in English or Kiswahili, a C- in Biology, Chemistry, Physics or Agriculture and a C- in Math	4 semesters Full-time or Work-based Day, Evening or Weekend	25,500/= / semester	MAIN
Certificate in: Community Development, Criminology & Security Studies, Project Planning & Management, Community Development	Mean grade D+ and above at KCSE, or D (Plain) + 2 years relevant work experience; and D (Plain in ENG/KIS)	3 semesters FT/ Evening/ Weekend	25,500/= / semester	ALL
Certificate in Information & Communication Technology	Mean grade D+ at KCSE OR A Computer Literacy Certificate from a Senate-recognized institution	4 months Full-time or Work-based Day, Evening or Weekend	30,000/= / course	MAIN
Certificate in Advanced Software Engineering	Mean grade D+ at KCSE and a D+ in Math OR a Diploma, Degree, Computer Literacy Certificate from a Senate-recognized institution	6 months /2 terms Full-time or Work-based Day, Evening or Weekend	48,000/= / course	MAIN
Certificate in Environmental Impact Assessment & Audit	KCSE OR a certificate from a Senate-recognized institution	6 months Full-time or Work-based Day, Evening or Weekend	40,000/= / term x 2	MAIN
Certificate in Computer Literacy/Packages Application	KCSE holder	3 months Full-time or Work-based Day, Evening or Weekend	15,000/= / course	MAIN
Bridging in all KCSE subjects	KCSE holder	3 months Full-time or Work-based Day, Evening or Weekend	15,000/= / course	ALL
CPA/CPS Sections 1 – 6	Students registered with KASNEB Sections 1 & 2 Students registered with KASNEB Sections 3 & 4 Students registered with KASNEB Sections 5 & 6	Full-time or Work-based Day, Evening or Weekend	10,000/= 12,000/= 15,000/=	MAIN MAIN MAIN
KATC Intermediate and Final	Students registered with KASNEB	Full-time or Work-based Day, Evening or Weekend	9,000/=	MAIN

**POSTGRADUATE PROGRAMMES**

Post-graduate Diploma in Education	First degree with two teaching subjects	1 year School-Based	34,000/= / block	ALL
------------------------------------	---	---------------------	------------------	-----

<b>Master of Business Administration (MBA); Master of Science (Msc) in:</b> Economics, Finance, Operations Management, Procurement & Logistics Management, Agribusiness Management, Animal Nutrition, Horticulture, Plant Biotechnology, Agronomy, Crop Protection, Plant Breeding, Dryland Agriculture, Soil Science, Environmental Science, Community Studies and Extension, Chemistry, Mathematics, Nutritional Sciences <b>Master of Arts in:</b> History, Philosophy, Religious Studies, English Language and Linguistics, Kiswahili, Literature & Sociology; <b>Master of Education in:</b> Curriculum and Instruction, Educational Foundations, Guidance and Counselling, Educational Management, Science Education. <b>Masters in Tourism Management</b>	Bachelor's degree from a related discipline with a second class honours upper and above, or second class honours lower and at least two years related work experience or research, from institutions recognized by the Senate	2 years Full-time or Work-Based; Day, Evening or Weekend	34,000/= to 67,500/=, depending on the programme and mode of study. Consult Graduate School for exact fees	ALL as directed by the Graduate School on behalf of the Senate
<b>Doctor of Philosophy (Ph.D.) in:</b> Business and Management, Agribusiness Management, Agricultural Economics, Animal Science, Horticulture, Plant Biotechnology, Crop Science, Dry Land Agriculture, Food Science, Environmental Science, Community Development, Literature, English, Religious Studies, Communication & Media Studies, Kiswahili, History and Political Science, Guidance & Counselling, Educational Management, Curriculum Development, Science Education, Educational Foundations, Biochemistry, Biomedicine, Chemistry, Mathematics & Statistics	Master's degree from a related discipline from institutions recognized by the Senate	3 years Full-time; 6 years Part-time or Work-Based; Day, Evening or Weekend	129,000/= to 145,000/= per year, depending on the programme and mode of study. Consult Graduate School for exact fees	ALL as directed by the Graduate School on behalf of the Senate

**APPLICATION PROCEDURE:**

- (a) Applications should be on official forms available at Chuka University Main Campus at Chuka, Igembe Campus at Ntueni or Keigoi High School, Embu Campus in Embu Town, Chogoria Campus at Nturi High School OR Website: [www.chuka.ac.ke](http://www.chuka.ac.ke); Non-refundable fee of KES 2,000 for degree and diploma programmes and KES 1,000 for certificate courses to be deposited in the following accounts:  
**Kenya Commercial Bank, Chuka Branch A/C No. 110 375 5439; or Cooperative Bank, Chuka Branch A/C No. 011 290 5818 9900, Equity Bank, Chuka Branch A/C No. 0210261453469, Barclays Chuka Branch A/C No. 2035727666, Family Bank Chuka Branch A/C No. 054000002641, Stanchart Meru Branch A/C No. 0102024755200**  
Deposits may be made at any branch.
- (b) Applicants must indicate preferred Campus, Mode and Commencement of study to be used if the quorum for the preference does not fill up to recommend alternative offers.
- (c) Return forms to P.O. Box 109 – 60400 Chuka. Attention should be: Director, Graduate School for postgraduate programmes, and Registrar (Academic) for Bachelor's, Diploma and Certificate courses. Certified copies of certificates and original fee payment receipt MUST be attached to the application form and returned latest two weeks prior to the commencement dates given for the programmes.
- (d) One Academic Year is equivalent to 2 semesters for full-time or 3 blocks for school-based mode.
- (e) Diploma holders may take a shorter period to complete a Bachelor's degree after credit transfer.
- (f) Preferred Campus should be indicated on the application form.

**CHUKA UNIVERSITY TELEPHONE LINES:**  
020-2329073, 020-2021721, 061-2304004,  
020-2329079, 020-2329073

**\* NB: FOR ALL COURSES, SEPARATE STATUTORY FEES SHALL BE INDICATED IN ADMISSION LETTERS**



# KASNEB

Providing globally competitive professionals

## SPECIAL CONCESSION TO THE 2016 KCSE CANDIDATES TO PURSUE KASNEB QUALIFICATIONS

KASNEB is a professional examinations body with the mandate to offer professional, diploma and technician qualifications in accountancy, finance, credit, governance and management, information technology and related disciplines. KASNEB administers its examinations throughout the East and Central Africa region and in other countries globally.

Currently, KASNEB administers five professional examinations and three diploma examinations that lead to the following qualifications:

### Professional Qualifications



#### Certified Public Accountants (CPA)

Certified Public Accountants are skilled and competent professional accountants, auditors, finance managers, tax consultants and practitioners both in public and private sectors.



#### Certified Secretaries (CS)

Certified Secretaries are experts and practitioners in governance, governance audits and compliance, corporate secretarial practice, corporate law, consultancy and business management and administration.



#### Certified Information Communication Technologists (CICT)

Certified Information Communication Technologists are skilled and competent system developers and programmers, network administrators, systems engineers, ICT consultants and practitioners.



#### Certified Investment and Financial Analysts (CIFA)

Certified Investment and Financial Analysts are experts in financial analysis, investments and securities, portfolio management, pension management, investment banking among related areas.



#### Certified Credit Professionals (CCP)

Certified Credit Professionals are skilled and competent top level managers, practitioners and consultants in the rapidly developing field of credit management.

### Minimum entry requirements

Kenya Certificate of Secondary Education (KCSE) with an aggregate average of at least grade C+ (C plus) provided the applicant has obtained a minimum of grade C+ (C plus) in both English and Mathematics or equivalent qualifications.

**We wish to invite the 2016 KCSE candidates who wish to pursue any of the KASNEB qualifications and who meet the minimum entry requirements to register for the respective qualification on or before Wednesday, 15 February 2017 at the applicable normal fees.**

**Registration forms, examination entry forms and other information may be obtained from the following sources:**

- (i) Download from the KASNEB website ([www.kasneb.or.ke](http://www.kasneb.or.ke)).
- (ii) Training institutions offering KASNEB courses.
- (iii) Kenya National Library Service branches countrywide.
- (iv) KASNEB Headquarters, Upper Hill, Nairobi.
- (v) KASNEB Huduma Centres in GPO, Kibra and Makadara in Nairobi, Mombasa, Eldoret, Kisumu, Meru, Nyeri, Kisii and Nakuru.

### Diploma Qualifications



#### Accounting Technicians Diploma (ATD)

The Accounting Technicians Diploma qualification equips candidates with skills and competencies to work as middle level accountants providing technical support in accounting, auditing and taxation in both the public and private sectors.



#### Diploma in Information Communication Technology (DICT)

The Diploma in Information Communication Technology equips the candidates with the technical know-how and skills necessary to work in the dynamic ICT industry as technicians in systems development, systems programming, internet and networking, administration and maintenance.



#### Diploma in Credit Management (DCM)

The Diploma in Credit Management graduates are competent and skilled to work as middle level credit managers and credit controllers in both financial and non-financial enterprises.

### Minimum entry requirements

Kenya Certificate of Secondary Education (KCSE) with an aggregate average of at least grade C- (C Minus) or equivalent qualifications.

### Why pursue a KASNEB qualification

- Internationally recognised.
- Highly rated by employers.
- International mobility.
- Membership to professional institutes of repute.
- Credit transfers with institutions of higher learning.

## FULLY ACCREDITED TRAINING INSTITUTIONS AS AT JANUARY 2017

1. Achievers College of Professionals - Embu
2. African Institute of Research and Development Studies - Eldoret
3. African Institute of Research and Development Studies - Kisumu
4. Alphax College - Eldoret
5. Bartek Institute - Eldama Ravine
6. Bartek Institute - Kabarnet
7. Catholic University of Eastern Africa, Main Campus - Nairobi
8. Century Park College - Machakos
9. College of Human Resource Management - Nairobi
10. Dedan Kimathi University of Technology, Nyeri Town Campus
11. East Africa School of Management - Nairobi
12. Eldoret National Polytechnic - Eldoret
13. Embu College - Embu
14. Excel Institute of Professionals - Thika
15. Fomic Business School, Buea - Cameroon
16. Graffins College - Nairobi
17. Gusii Institute of Technology - Kisii
18. Institut Polytechnique De Byumba, Byumba - Rwanda
19. Institut Professionnel De Certification - Douala, Cameroon
20. Jaramogi Oginga University of Science and Technology - Bondo
21. Jomo Kenyatta University of Agriculture and Technology, Main Campus - Nairobi
22. Jomo Kenyatta University of Agriculture and Technology, Nakuru CBD Campus - Nakuru
23. Kabete Technical Training Institute - Nairobi
24. Kaiboi Technical Training Institute - Eldoret
25. KCA University, Kisumu Campus - Kisumu
26. KCA University, Main Campus - Nairobi
27. Kenya Institute of Management - Nairobi
28. Kenya School of Credit Management - Nairobi
29. Kenya School of Government - Mombasa
30. Kiambu Institute of Science and Technology - Kiambu
31. Kibabii University - Bungoma
32. Kigali Institute of Management, Kigali - Rwanda
33. Kirinyaga University - Kerugoya
34. The Kisumu National Polytechnic - Kisumu
35. Kitale Technical Training Institute - Kitale
36. Maaron Business School, Douala - Cameroon
37. Machakos Institute of Technology - Machakos
38. Machakos University - Machakos
39. Masai Technical Training Institute - Kajiado
40. Meru National Polytechnic - Meru
41. Michuki Technical Training Institute - Kangema
42. Mombasa Aviation Training Institute - Mombasa
43. Kenya Coast National Polytechnic - Mombasa
44. Mount Kenya University, Nkubu Campus - Nkubu
45. Murang'a University of Technology - Murang'a
46. Mwangaza College - Nakuru
47. Nairobi Institute of Business Studies - Ruiru Campus
48. Nakuru Counseling and Training Institute - Nakuru
49. NEP Technical Training Institute - Garissa
50. Nishkam Saint Pura Singh Institute - Kericho
51. Nkabune Technical Training Institute - Meru
52. Nyandarua Institute of Science and Technology - Nyahururu
53. NYS Technical Training College - Mombasa
54. NYS Technical Training Institute - Naivasha
55. Ol'lessos Technical Training Institute - Lessos
56. Oshwal College - Nairobi
57. PC Kinyanjui Technical Training Institute - Nairobi
58. Pinnacle Business School - Nairobi
59. Ramogi Institute of Advanced Technology - Kisumu
60. Riarra University - Nairobi
61. Rift Valley Institute of Science and Technology - Nakuru
62. Rift Valley Technical Training Institute - Eldoret
63. Rongo University - Rongo
64. Royal Business School - Nairobi
65. Rware College of Accounts - Nyeri
66. University of Rwanda, College of Business and Economics - Kigali, Rwanda
67. Shamberere Technical Training Institute - Kakamega
68. Sigalagala National Polytechnic - Kakamega
69. St. Paul's University, Main Campus - Limuru
70. St. Paul's University, Nairobi Campus - Nairobi
71. Star College of Management Studies - Nairobi
72. Strathmore University - Nairobi
73. Summit Institute of Professionals - Nairobi
74. Thika Technical Training Institute - Thika
75. Times Training Centre - Mombasa
76. University of Eastern Africa, Baraton - Kapsabet
77. Vision Institute of Professionals, Mombasa Campus - Mombasa
78. Vision Institute of Professionals, Nairobi Campus - Nairobi

The full list of training institutions including those awarded interim accreditation and others in the process of accreditation is available on the KASNEB website. All TVET institutions are required to register with TVETA.

KASNEB Towers, Hospital Road, Upper Hill P.O. Box 41362 - 00100 Nairobi Tel: +254 (020) 4923000 Fax: +254 (020) 2712915

Cellphone: +254722-201214/+254734-600624 E-mail: [info@kasneb.or.ke](mailto:info@kasneb.or.ke), [marketing@kasneb.or.ke](mailto:marketing@kasneb.or.ke)

Website: [www.kasneb.or.ke](http://www.kasneb.or.ke) Facebook: KASNEBOfficial Twitter: @KASNEBOfficial



KASNEB is ISO 9001:2015 certified



# My Friday Network

Look back on the moments that matter with the people who count on My Network.

Every Friday in the Daily Nation

my **Network**

Work it! DAILY NATION